



**PRL**

GLASS  
SYSTEMS | Aluminum  
ARCHITECTURAL PRODUCTS  
Complete Glazing Solutions

**IF  SPEED MATTERS!**

We offer an Urgency Program for Faster Leadtimes

\*Consult PRL for details

# SHOWER / STEAM UNITS

**COMPLETE SHOWER UNITS GLASS & HARDWARE PRE-FAB, READY TO INSTALL!**



- Shower Hardware
- Tempered Safety Glass
- 1/4", 3/8" or 1/2" Glass
- Hinge/Pivot Swing or Slider Doors
- Clear, Textured or Sandblast Glass
- Water/Steam Tight Seals
- Custom Glass/Metal Fabrication

PHONE: 877.775.2586

FAX: 877.274.8800

[www.prlglass.com](http://www.prlglass.com)

# SHOWER / STEAM UNITS

*Boundless Possibilities. Boundless Beauty.*

At PRL, we take the guesswork out of building stunning complete and custom shower systems. Supplying everything you need to design a frameless shower door unit, we're your one-stop-shop for customizing awe-inspiring complete shower enclosures.

Manufacturing complete shower units in-house, we can fabricate practically any custom shower configuration for frameless shower door sliders and swing door enclosures. At PRL, the sky's the limit. Imagine the possibilities!



PLEASE NOTE: PRL continuously improves product design and performance. We reserve the right to make changes without notice.



*Frameless Shower Slider with tempered Shower Glass*

## PRL'S SHOWER UNITS & SLIDERS



*Shower Unit with Polished Chrome C-Pull*



*Neo-Angle Shower Unit with Shower Glass & Matte Black Hardware*

# CONTENT

<b>CONFIGURATIONS</b>	<b>06</b>	<b>SLEEVE OVER CLAMP</b>	<b>44</b>	<b>TOWEL BARS</b>	<b>88</b>
<b>BEVERLY HINGES</b>	<b>10</b>	<b>SEAL</b>	<b>48</b>	<b>DIAMOND SEAL GLASS</b>	<b>96</b>
<b>BEVERLY CLAMP</b>	<b>14</b>	<b>RUBY SD SLIDER</b>	<b>50</b>	<b>GLASS SELECTION</b>	<b>100</b>
<b>BELLA HD HINGE</b>	<b>18</b>	<b>TIFFANY SD SLIDER</b>	<b>54</b>	<b>GLASS FABRICATION</b>	<b>108</b>
<b>SADE HINGES</b>	<b>22</b>	<b>BIPASS SD SLIDER</b>	<b>58</b>	<b>SANDBLAST</b>	<b>114</b>
<b>SADE CLAMP</b>	<b>28</b>	<b>CUSTOM UNITS</b>	<b>64</b>	<b>SPANDREL</b>	<b>118</b>
<b>SIDNEY HD CLAMP</b>	<b>32</b>	<b>STALLS &amp; PARTITIONS</b>	<b>70</b>	<b>MIRRORS</b>	<b>122</b>
<b>SUPPORT ELEMENTS</b>	<b>38</b>	<b>PULLS &amp; HANDLES</b>	<b>74</b>	<b>INTERIOR DOORS</b>	<b>128</b>
<b>U-CHANNELS</b>	<b>40</b>	<b>KNOBS</b>	<b>84</b>	<b>OTHER PRL PRODUCTS...</b>	<b>130</b>

# CONFIGURATIONS



**STEAM UNIT**



**NEO-ANGLE**



**135-DEGREE**



**SINGLE DOORS**



**DOUBLE DOORS**



**SHOWER SLIDERS**



**90-DEGREE**



**IN-LINE**



**SPLASH PANEL**



**CUSTOM UNIT**

*ONE PIECE CUSTOM GLASS!*



## POINTS TO CONSIDER

- When designing a shower unit three factors one must consider: total height, total width and total square area.
- The majority of frameless shower units and sliders are assembled using 3/8" and 1/2" Glass thickness
- The width and weight limitations for sliding and swinging operable doors are determined by the specifications on the selected hardware. See specifications per PRLs hardware limitation that must be followed

- Maximum recommended height and width,

(A) Height -Two vertical or horizontal edges are supported

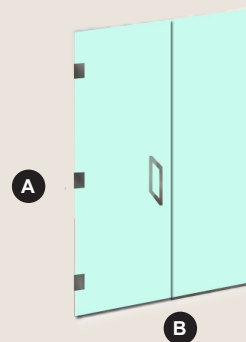
-The for 3/8" glass is 84 inches

-The maximum height for 1/2" glass is 120 inches

(B) Width

- 3/8" glass is 30 inches

- 1/2" glass is 36 inches



There are several ways to safely secure the fixed panel from which the door will hinge. One way is to attach the fixed panel to a ceiling, securing the top and bottom edges of the glass (*Support Elements page 60*). Another method is to use a Header extrusion across the top of all fixed panels (*Headers page 62*).

# GLASS ORDER CHECKLIST

## SHOWER DOOR GLASS ONLY CHECKLIST

FOR: \_\_\_\_\_

DATE: \_\_\_\_/\_\_\_\_/\_\_\_\_

JOB/PO: \_\_\_\_\_

CONTACT: \_\_\_\_\_

### DIMENSIONS

OUT OF SQUARE ☐  
LEVEL: \_\_\_\_\_

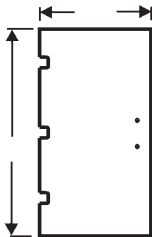
### OPENING

OPENING SIZES ☐  
NET GLASS SIZES ☐

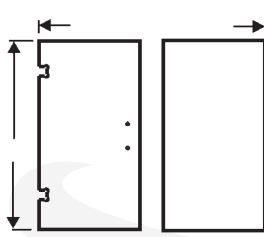
STEAM UNIT ☐  
OPEN TOP ☐

### REFERENCE

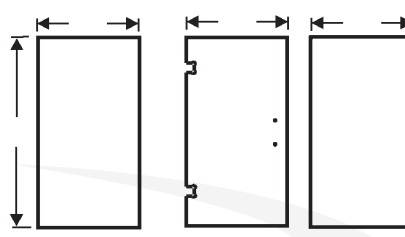
CENTERLINE ☐ OUTSIDE ☐ INSIDE ☐  
OTHER: \_\_\_\_\_



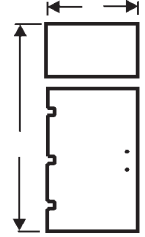
SINGLE DOORS



IN LINE UNITS



NEO-ANGLE/90-135 UNITS



STEAM UNITS

### GLASS

#### SIZE

3/8 ☐  
1/2 ☐

#### TYPE

TEMPERED ☐  
ANNEALED ☐

#### SANDBLASTED

BACK FACE ☐  
FRONT FACE ☐

#### DIAMOND SEAL

DO NOT APPLY ☐

### COLOR

CLEAR ☐ OTHER ☐  
COLOR ☐ \_\_\_\_\_

#### BUG

REG ☐  
COBB ☐  
NO BUG ☐

#### TEXTURED

BACK FACE ☐  
FRONT FACE ☐

APPLY ☐

BACK FACE ☐  
FRONT FACE ☐

## HARDWARE REFERENCES

### HINGES/PIVOTS

WALL MOUNT ☐  
TOP/BOTTOM ☐

PN# \_\_\_\_\_ ☐

ATTACHED ☐

TEMPLATE ☐

LOCATION \_\_\_\_\_ ☐

☿ ☐ TO EDGE ☐

### SEALS (@HINGE EDGE ONLY)

NO SEALS ☐

SEALS ☐

PN# \_\_\_\_\_

DEDUCTION ☐

APPLIED \_\_\_\_\_

### PULLS

PULL ☐

KNOB ☐

PULL/TOWEL BAR ☐

SIZE \_\_\_\_\_

PN# \_\_\_\_\_

LOC HGT \_\_\_\_\_ IN \_\_\_\_\_

☿ ☐ TO EDGE ☐

### TOWEL BAR

SINGLE ☐

BACK/BACK ☐

SIZE \_\_\_\_\_

PN# \_\_\_\_\_

LOC HGT \_\_\_\_\_ IN \_\_\_\_\_

☿ ☐ TO EDGE ☐

### SUPPORT ELEMENTS

U-CHANNELS ☐

CLAMPS ☐

PN# \_\_\_\_\_

ATTACHED ☐

TEMPLATE ☐

LOC HGT \_\_\_\_\_ IN \_\_\_\_\_

☿ ☐ TO EDGE ☐

### STEAM UNITS

TRANSOM CLAMP ☐

TILT ☐

FIXED ☐

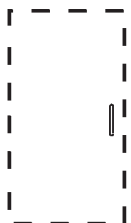
PN # \_\_\_\_\_

ATTACHED ☐

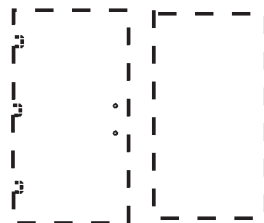
TEMPLATE ☐

### NOTES:

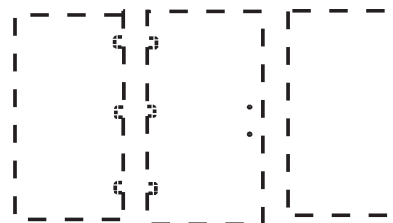
\_\_\_\_\_  
\_\_\_\_\_  
\_\_\_\_\_



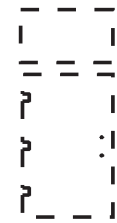
SINGLE DOORS



IN LINE UNITS



NEO-ANGLE/90-135 UNITS



STEAM UNITS

# BEVERLY HINGE SERIES

The Beverly series offers a beautifully crafted all-beveled, rounded corner design to seamlessly compliment your shower doors. The Standard hardware in this series- The Beverly, is slightly smaller in size and perfect for doors under 80lbs. We offer several types of these hinges. A short back plate hinge, an offset plate hinge, a 180° glass to glass hinge and a 135° glass to glass hinge



*90 Degree Shower Unit with Brushed Nickel Beverly Hardware*

# OFFSET HINGE

BEVERLY SERIES

Beveled wall mount hinge with an offset back plate. The screws are mounted to the inside of the shower which allows for a cleaner look to your enclosure. Hinge gaskets, anchors and mounting screws are included.

3/8" Glass 80 lbs 28" W		<b>2 Hinges:</b> 1/2" Glass 80 Lbs 28" W
3/8" Glass 120 lbs 32" W		<b>3 Hinges:</b> 1/2" Glass 120 Lbs 32" W



ITEM NO. PL-TB044BN

*Brushed Nickel*  
Glass Thickness 3/8" up to 1/2"



ITEM NO. PL-TB044CH

*Polished Chrome*  
Glass Thickness 3/8" up to 1/2"



ITEM NO. PL-TB044ORB

*Oil Rubbed Bronze*  
Glass Thickness 3/8" up to 1/2"



ITEM NO. PL-TB044MB

*Matte Black*  
Glass Thickness 3/8" up to 1/2"

# SHORT BACK PLATE HINGE

A beveled wall mount hinge with a short back plate that allows for a tighter clearance and a cleaner look. Glass Hinge Specifications. Hinge gaskets, anchors and mounting screws are included.

3/8" Glass 80 lbs 28" W		<b>2 Hinges:</b> 1/2" Glass 80 Lbs 28" W
3/8" Glass 120 lbs 32" W		<b>3 Hinges:</b> 1/2" Glass 120 Lbs 32" W



ITEM NO. PL-TB074BN

*Brushed Nickel*  
Glass Thickness 3/8" up to 1/2"



ITEM NO. PL-TB074CH

*Polished Chrome*  
Glass Thickness 3/8" up to 1/2"



ITEM NO. PL-TB074ORB

*Oil Rubbed Bronze*  
Glass Thickness 3/8" up to 1/2"



ITEM NO. PL-TB074MB

*Matte Black*  
Glass Thickness 3/8" up to 1/2"

## BEVERLY SERIES



*Neo-Angle Shower Unit with Brushed Nickel Beverly Full Plate & 135 Degree Hinges*

# 135° HINGE

BEVERLY SERIES

A beveled 135° glass/glass hinge. Glass fab is required, please see hinge template for glass fabrication and hinge specs. Hinge gaskets are included. Made out of solid brass material, overall weight 2 lb

3/8" Glass 80 lbs 28" W

**2 Hinges:**  
1/2" Glass 80 Lbs 28" W

3/8" Glass 120 lbs 32" W

**3 Hinges:**  
1/2" Glass 120 Lbs 32" W



ITEM NO. PL-TB045BN

*Brushed Nickel*  
Glass Thickness 3/8" up to 1/2"



ITEM NO. PL-TB045CH

*Polished Chrome*  
Glass Thickness 3/8" up to 1/2"



ITEM NO. PL-TB045ORB

*Oil Rubbed Bronze*  
Glass Thickness 3/8" up to 1/2"



ITEM NO. PL-TB045MB

*Matte Black*  
Glass Thickness 3/8" up to 1/2"

# 180° HINGE

A beveled 180° glass/glass hinge. Glass fab is required, please see hinge template for glass fabrication and hinge specs. Hinge gaskets are included. Made out of solid brass material, overall weight 2 lb

3/8" Glass 80 lbs 28" W

**2 Hinges:**  
1/2" Glass 80 Lbs 28" W

3/8" Glass 120 lbs 32" W

**3 Hinges:**  
1/2" Glass 120 Lbs 32" W



ITEM NO. PL-TB180BN

*Brushed Nickel*  
Glass Thickness 3/8" up to 1/2"



ITEM NO. PL-TB180CH

*Polished Chrome*  
Glass Thickness 3/8" up to 1/2"



ITEM NO. PL-TB180ORB

*Oil Rubbed Bronze*  
Glass Thickness 3/8" up to 1/2"



ITEM NO. PL-TB180MB

*Matte Black*  
Glass Thickness 3/8" up to 1/2"

# BEVERLY CLAMP SERIES

PRL offers a wide assortment of premium shower door clamps for the Beverly series. Providing fixed glass clamps, transom glass to glass clamp, transom wall clamp, 90° and 135° glass-to-glass fixed clamps, PRL can meet your shower door hardware needs.



*Glass Partition with Oil Rubbed Bronze Fixed Clamps*



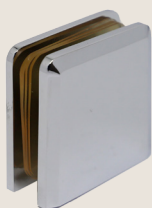
## FIXED WALL CLAMP

A beveled 2" X 2" fixed clamp that will match our bella series hinges. Glass fabrication is required, a 78 hole or "U" notch will work with this clamp. Clamp gaskets, anchor and mounting screw are included. Clamp gaskets, anchor and mounting screw are included.



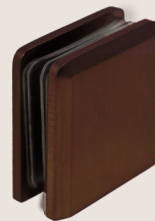
ITEM NO. PL-TBCBN

*Brushed Nickel*  
Glass Thickness 3/8" up to 1/2"



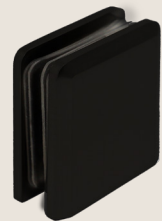
ITEM NO. PL-TBCCH

*Polished Chrome*  
Glass Thickness 3/8" up to 1/2"



ITEM NO. PL-TBCORB

*Oil Rubbed Bronze*  
Glass Thickness 3/8" up to 1/2"



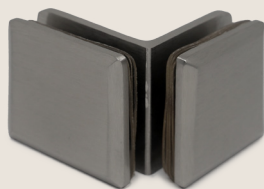
ITEM NO. PL-TBCMB

*Matte Black*  
Glass Thickness 3/8" up to 1/2"

# CLAMP 90 DEGREE

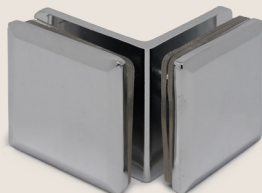
BEVERLY SERIES

A beveled 90° glass to glass fixed clamp that will match our bella series hinges. Glass fabrication is required. Clamp gaskets are included. Suitable for Toughened Glass Doors Thickness 3/8" and 1/2". Made out of solid brass material.



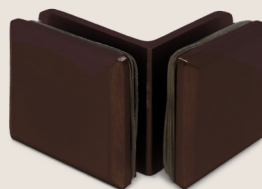
ITEM NO. PL-TBC90BN

*Brushed Nickel*  
Glass Thickness 3/8" up to 1/2"



ITEM NO. PL-TBC90CH

*Polished Chrome*  
Glass Thickness 3/8" up to 1/2"



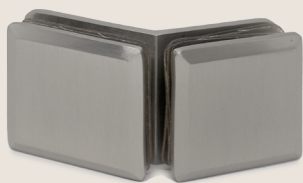
ITEM NO. PL-TBC90ORB

*Oil Rubbed Bronze*  
Glass Thickness 3/8" up to 1/2"



# 135 DEGREE GLASS CLAMP

A beveled 135° glass to glass fixed clamp that will match our bella series hinges. Glass fabrication is required. Clamp gaskets are included. Suitable for Toughened Glass Doors Thickness 3/8" and 1/2". Made out of solid brass material.



ITEM NO PL-TBC135BN

*Brushed Nickel*  
Glass Thickness 3/8" up to 1/2"



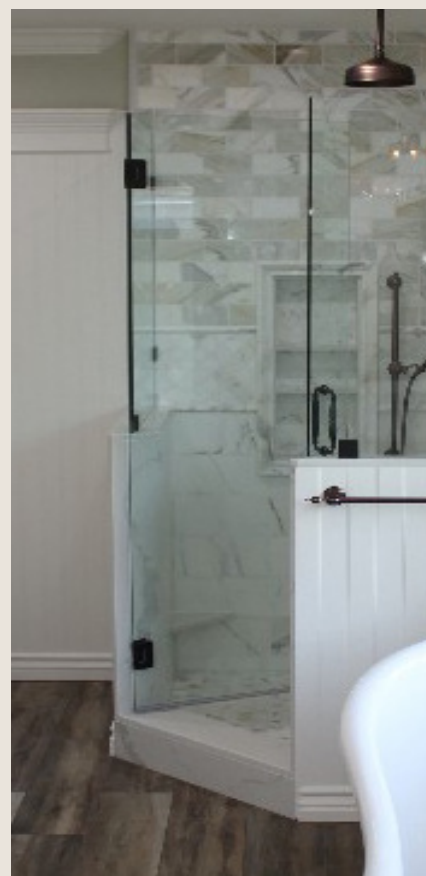
ITEM NO PL-TBC135CH

*Polished Chrome*  
Glass Thickness 3/8" up to 1/2"



ITEM NO PL-TBC135ORB

*Oil Rubbed Bronze*  
Glass Thickness 3/8" up to 1/2"



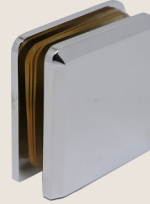
# TRANSOM WALL CLAMP

A beveled wall mounted moveable transom clamp that will match our bella series hinges. Glass fabrication is required, a 7/8 hole or a "U" notch can be used with this clamp. Clamp gaskets are included. Suitable for Toughened Glass Doors Thickness 3/8" and 1/2". Made out of solid brass material.



ITEM NO. PL-TBC186BN

*Brushed Nickel*  
Glass Thickness 3/8" up to 1/2"



ITEM NO. PL-TBC186CH

*Polished Chrome*  
Glass Thickness 3/8" up to 1/2"

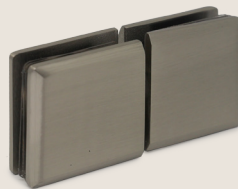


ITEM NO. PL-TBC186ORB

*Oil Rubbed Bronze*  
Glass Thickness 3/8" up to 1/2"

# TRANSOM GLASS TO GLASS

A beveled glass to glass moveable transom clamp that will match our bella series hinges. Glass fabrication is required, a 7/8 hole or a "U" notch can be used with this clamp. Clamp gaskets are included.



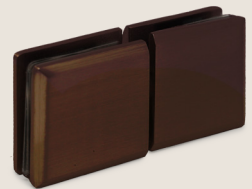
ITEM NO. PL-TBC188BN

*Brushed Nickel*  
Glass Thickness 3/8" up to 1/2"



ITEM NO. PL-TBC188CH

*Polished Chrome*  
Glass Thickness 3/8" up to 1/2"



ITEM NO. PL-TBC188ORB

*Oil Rubbed Bronze*  
Glass Thickness 3/8" up to 1/2"

# BELLA HD SERIES

Available in HEAVY DUTY and Standard hinges this series was designed to accommodate all your needs no matter how heavy or light. The Bella/Beverly series offers a beautifully crafted all-BEVELED, rounded corner design to seamlessly compliment your shower doors.

The Heavy Duty hardware in this series- The Bella, is slightly larger in size and will accommodate doors over 80lbs. We offer several types of these hinges. A short back plate hinge, an offset plate hinge, a 180° glass to glass hinge and a 135° glass to glass hinge.



*Custom Steam Unit with Heavy Duty Bella HD 180 Degree Hinges*

# OFFSET HINGE

BELLA SERIES

Offset back plate heavy duty wall mount hinge. The screws are mounted to the inside of the shower which allows for a cleaner look to your enclosure. Glass fabrication is required. Hinge gaskets, anchors and mounting screws are included

**2 Hinges:**  
3/8" Glass 100 lbs 34" W | 1/2" Glass 100 Lbs 32" W

**3 Hinges:**  
3/8" Glass 130 lbs 34" W | 1/2" Glass 130 Lbs 32" W



ITEM NO. PL-TBHD044BN

*Brushed Nickel*  
Glass Thickness 3/8" up to 1/2"



ITEM NO. PL-TBHD044CH

*Polished Chrome*  
Glass Thickness 3/8" up to 1/2"



ITEM NO. PL-TBHD044ORB

*Oil Rubbed Bronze*  
Glass Thickness 3/8" up to 1/2"



ITEM NO. PL-TBHD044MB

*Matte Black*  
Glass Thickness 3/8" up to 1/2"

# SHORT BACK PLATE HINGE

The Bella heavy duty Hinge has short back plate that allows for a tighter clearance and a cleaner look. Glass fabrication is required. Hinge gaskets, anchors and mounting screws are included.

**2 Hinges:**  
3/8" Glass 100 lbs 34" W | 1/2" Glass 100 Lbs 32" W

**3 Hinges:**  
3/8" Glass 130 lbs 34" W | 1/2" Glass 130 Lbs 32" W



ITEM NO. PL-TBHD074BN

*Brushed Nickel*  
Glass Thickness 3/8" up to 1/2"



ITEM NO. PL-TBHD074CH

*Polished Chrome*  
Glass Thickness 3/8" up to 1/2"



ITEM NO. PL-TBHD074ORB

*Oil Rubbed Bronze*  
Glass Thickness 3/8" up to 1/2"



ITEM NO. PL-TBHD074MB

*Matte Black*  
Glass Thickness 3/8" up to 1/2"

# 135° HINGE

BELLA SERIES

Our Bella 135° glass to glass heavy duty hinge holds more weight. Please review the hinge width and weight allowances. Gaskets are included. Glass requires fabrication.

**2 Hinges:**  
3/8" Glass 110 lbs 36" W | 1/2" Glass 110 Lbs 36" W

**3 Hinges:**  
3/8" Glass 140 lbs 36" W | 1/2" Glass 140 Lbs 36" W



ITEM NO. PL-TBHD045BN

*Brushed Nickel*  
Glass Thickness 3/8" up to 1/2"



ITEM NO. PL-TBHD045CH

*Polished Chrome Glass*  
Thickness 3/8" up to 1/2"



ITEM NO. PL-TBHD045ORB

*Oil Rubbed Bronze*  
Glass Thickness 3/8" up to 1/2"



ITEM NO. PL-TBHD045MB

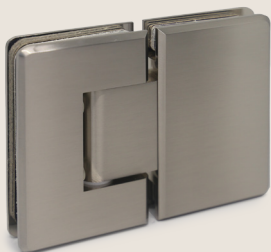
*Matte Black*  
Glass Thickness 3/8" up to 1/2"

# 180° HINGE

Sade square 180 degree glass to glass hinge. Glass fabrication is required. Please see hinge Specifications. Hinge gaskets are included.

**2 Hinges:**  
3/8" Glass 110 lbs 36" W | 1/2" Glass 110 Lbs 36" W

**3 Hinges:**  
3/8" Glass 140 lbs 36" W | 1/2" Glass 140 Lbs 36" W



ITEM NO. PL-TBHD180BN

*Brushed Nickel*  
Glass Thickness 3/8" up to 1/2"



ITEM NO. PL-TBHD180CH

*Polished Chrome Glass*  
Thickness 3/8" up to 1/2"



ITEM NO. PL-TBHD180ORB

*Oil Rubbed Bronze*  
Glass Thickness 3/8" up to 1/2"



ITEM NO. PL-TBHD180MB

*Matte Black*  
Glass Thickness 3/8" up to 1/2"

## BELLA HEAVY DUTY SERIES



*90 Degree Shower Unit with Chrome Bella HD Hinges*

# SADE HINGE SERIES

For a modern, contemporary, décor, the Sade hardware delivers just that. This hardware boasts crisp, clean lines with complete SQUARE edges and flat surfaces that create a modern, yet simple, accent. We offer several types of these hinges.

The Standard hardware in this series- The Sade, is slightly smaller in size and perfect for smaller doors. The flat surface and square edges provide sleekness and class to any shower door. We offer several types of these hinges. A short back plate hinge, an offset plate hinge, a 180° glass to glass hinge and a 135° glass to glass hinge



*Shower Unit with Starphire Glass and Sade Series Hardware*



# SHORT BACK PLATE HINGE

A square wall mount hinge with a short back plate that allows for a tighter clearance and a cleaner look. Glass fabrication is required, please see hinge specifications. Hinge gaskets, anchors and mounting screws are included

3/8" Glass 80 lbs 28" W		<b>2 Hinges:</b>
		1/2" Glass 80 Lbs 28" W
3/8" Glass 120 lbs 32" W		<b>3 Hinges:</b>
		1/2" Glass 120 Lbs 32" W



ITEM NO. PL-TS074BN

*Brushed Nickel  
Glass Thickness 3/8" up to 1/2"*



ITEM NO. PL-TS074CH

*Polished Chrome Glass  
Thickness 3/8" up to 1/2"*



ITEM NO. PL-TS074ORB

*Oil Rubbed Bronze  
Glass Thickness 3/8" up to 1/2"*



ITEM NO. PL-TS074MB

*Matte Black  
Glass Thickness 3/8" up to 1/2"*

## SADE SERIES



*Shower Unit with a Custom Cut-out Vent and Sade Hardware*

# 135° HINGE

SADE SERIES

Sade Series square 135 degree Glass/ Glass hinge. Glass fabrication is required. Please see hinge capabilities for glass fabrication. Hinge gaskets are included

3/8" Glass 80 lbs 28" W

**2 Hinges:**  
1/2" Glass 80 Lbs 28" W

3/8" Glass 120 lbs 32" W

**3 Hinges:**  
1/2" Glass 120 Lbs 32" W



ITEM NO. PL-TS045BN

*Brushed Nickel*  
Glass Thickness 3/8" up to 1/2"



ITEM NO. PL-TS045CH

*Polished Chrome Glass*  
Thickness 3/8" up to 1/2"



ITEM NO. PL-TS045ORB

*Oil Rubbed Bronze*  
Glass Thickness 3/8" up to 1/2"



ITEM NO. PL-TS045MB

*Matte Black*  
Glass Thickness 3/8" up to 1/2"

# 180° HINGE

Sade square 180 degree glass to glass hinge. Glass fabrication is required. Please see hinge Specifications. Hinge gaskets are included.

3/8" Glass 80 lbs 28" W

**2 Hinges:**  
1/2" Glass 80 Lbs 28" W

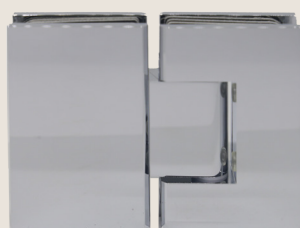
3/8" Glass 120 lbs 32" W

**3 Hinges:**  
1/2" Glass 120 Lbs 32" W



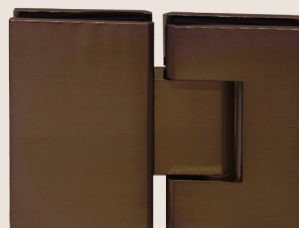
ITEM NO. PL-TS180BN

*Brushed Nickel*  
Glass Thickness 3/8" up to 1/2"



ITEM NO. PL-TS180CH

*Polished Chrome Glass*  
Thickness 3/8" up to 1/2"



ITEM NO. PL-TS180ORB

*Oil Rubbed Bronze*  
Glass Thickness 3/8" up to 1/2"



ITEM NO. PL-TS180MB

*Matte Black*  
Glass Thickness 3/8" up to 1/2"

## SADE SERIES



# OFFSET BACK PLATE HINGE

Sade square wall mount hinge with a offset back plate.  
Glass fabrication is required, please see. Hinge gaskets,  
anchors and mounting screws are included

3/8" Glass 80 lbs 28" W | 1/2" Glass 80 Lbs 28" W

**2 Hinges:**

3/8" Glass 120 lbs 32" W | 1/2" Glass 120 Lbs 32" W

**3 Hinges:**



ITEM NO. PL-TS044BN

*Brushed Nickel*  
Glass Thickness 3/8" up to 1/2"



ITEM NO. PL-TS044CH

*Polished Chrome*  
Glass Thickness 3/8" up to 1/2"



ITEM NO. PL-TS044ORB

*Oil Rubbed Bronze*  
Glass Thickness 3/8" up to 1/2"



ITEM NO. PL-TS044MB

*Matte Black*  
Glass Thickness 3/8" up to 1/2"

## SADE SERIES



*Oversized Unit with Sade Hardware and Custom Glass Vent Cut-Out*

# SADE CLAMP SERIES

The Standard hardware in this series- The Sade, is slightly smaller in size and perfect for smaller doors. The flat surface and square edges provide sleekness and class to any shower door. We offer several types of these clamps.



*Steam Unit with Mate Black Sade Clamps*

# FIXED WALL CLAMP

SADE SERIES

A square 2”X2 ” fixed clamp that will match our sidney series hinges. Glass fabrication is required, 7/8 Hole or a “U” Notch Will Work With This Clamp. Clamp Gasket, Anchor And Mounting Screw Are Included



ITEM NO. PL-TSCBN

*Brushed Nickel*  
Glass Thickness 3/8” up to 1/2”



ITEM NO. PL-TSCCH

*Polished Chrome*  
Glass Thickness 3/8” up to 1/2”



ITEM NO. PL-TSCORB

*Oil Rubbed Bronze*  
Glass Thickness 3/8” up to 1/2”



ITEM NO. PL-TSCMB

*Matte Black*  
Glass Thickness 3/8” up to 1/2”

---

# TRANSOM WALL CLAMP

A square wall mounted moveable transom clamp that will match our sidney series hinges. Glass fabrication is required. A 7/8 hole or a “U” notch can be used with this clamp. Clamp gasket, anchor and mounting screw are included.



ITEM NO. PL-TSC186BN

*Brushed Nickel*  
Glass Thickness 3/8” up to 1/2”



ITEM NO. PL-TSC186CH

*Polished Chrome*  
Glass Thickness 3/8” up to 1/2”



ITEM NO. PL-TSC186ORB

*Oil Rubbed Bronze*  
Glass Thickness 3/8” up to 1/2”



ITEM NO. PL-TSC186MB

*Matte Black*  
Glass Thickness 3/8” up to 1/2”

# TRANSOM GLASS TO GLASS

A square glass to glass moveable transom clamp that will match our sidney series hinges. Glass fabrication is required. A 7/8 hole or a "U" notch can be used with this clamp. Clamp gaskets are included.



ITEM NO. PL-TBC188BN

*Brushed Nickel*  
Glass Thickness 3/8" up to 1/2"



ITEM NO. PL-TBC188CH

*Polished Chrome*  
Glass Thickness 3/8" up to 1/2"



ITEM NO. PL-TBC188ORB

*Oil Rubbed Bronze*  
Glass Thickness 3/8" up to 1/2"



ITEM NO. PL-TBC188MB

*Matte Black*  
Glass Thickness 3/8" up to 1/2"



*Double Doors Shower Unit with Oil Rubbed Bronze Beverly Hardware*

## SIDNEY HD SERIES



*Custom Height Steam Unit with Polished Chrome Sidney Heavy Duty Hinges*

# SIDNEY HD SERIES

For a modern, contemporary, décor, the Sidney HEAVY DUTY hardware delivers just that. This hardware boasts crisp, clean lines with complete SQUARE edges and flat surfaces that create a modern, yet simple, accent. We offer several types of these hinges.

The Heavy Duty hardware in this series- The Sidney, is slightly larger in size and was designed for shower doors that require heavy duty hinges. The Sidney hinge accommodates a greater door width compared to the Sade Series hinge. We offer several types of these hinges. A short back plate hinge, an offset plate hinge, a 180° glass to glass hinge. We can special order the 135° glass to glass hinge.



*90 Degree Shower Unit with Brushed Nickel Sidney Heavy Duty Hardware*

# FULL PLATE HINGE (HD)

SIDNEY SERIES

Our Sidney heavy duty wall mount hinge comes with a full back plate, which allows for wider and heavier doors. Includes: hinge gaskets, mounting screws and anchors. Glass requires fabrication. See hinge capabilities.

<b>2 Hinges:</b>	
3/8" Glass 110 lbs 36" W	1/2" Glass 110 Lbs 36" W
<b>3 Hinges:</b>	
3/8" Glass 140 lbs 36" W	1/2" Glass 140 Lbs 36" W



ITEM NO. PL-TSHD037BN

ITEM NO. PL-TSHD037CH

ITEM NO. PL-TSHD037ORB

ITEM NO. PL-TSHD037MB

*Brushed Nickel*  
Glass Thickness 3/8" up to 1/2"

*Polished Chrome*  
Glass Thickness 3/8" up to 1/2"

*Oil Rubbed Bronze*  
Glass Thickness 3/8" up to 1/2"

*Matte Black*  
Glass Thickness 3/8" up to 1/2"

# SHORT PLATE HINGE (HD)

Our Sidney heavy duty wall mount hinge comes with a short back plate. The short back plate allows the doors to have a tighter clearance for a cleaner look. Includes: hinge gaskets, mounting screws and anchors.

<b>2 Hinges:</b>	
3/8" Glass 100 lbs 34" W	1/2" Glass 100 Lbs 32" W
<b>3 Hinges:</b>	
3/8" Glass 130 lbs 34" W	1/2" Glass 130 Lbs 32" W



ITEM NO. PL-TSHD074BN

ITEM NO. PL-TSHD074CH

ITEM NO. PL-TSHD074ORB

ITEM NO. PL-TSHD074MB

*Brushed Nickel*  
Glass Thickness 3/8" up to 1/2"

*Polished Chrome*  
Glass Thickness 3/8" up to 1/2"

*Oil Rubbed Bronze*  
Glass Thickness 3/8" up to 1/2"

*Matte Black*  
Glass Thickness 3/8" up to 1/2"

## SADE SERIES



*135-Degree Shower Unit with Brushed Nickel Beverly Hardware*

# 135° HINGE (HD)

SIDNEY SERIES

Our Sidney 135° glass to glass heavy duty hinge holds more weight and allows for a greater door width compared to the Sade series hinge. Gaskets are included. Glass requires fabrication. See hinge capabilities.

**2 Hinges:**  
3/8" Glass 110 lbs 36" W | 1/2" Glass 110 Lbs 36" W

**3 Hinges:**  
3/8" Glass 140 lbs 36" W | 1/2" Glass 140 Lbs 36" W



ITEM NO. PL-TSHD045BN

*Brushed Nickel*  
Glass Thickness 3/8" up to 1/2"



ITEM NO. PL-TSHD045CH

*Polished Chrome*  
Glass Thickness 3/8" up to 1/2"



ITEM NO. PL-TSHD045ORB

*Oil Rubbed Bronze*  
Glass Thickness 3/8" up to 1/2"



ITEM NO. PL-TSHD045MB

*Matte Black*  
Glass Thickness 3/8" up to 1/2"

# 180° HINGE (HD)

Our Sidney 180° glass to glass heavy duty hinge holds more weight and allows for a greater door width compared to the Sade series hinge. Gaskets are included. Glass requires fabrication. See hinge capabilities.

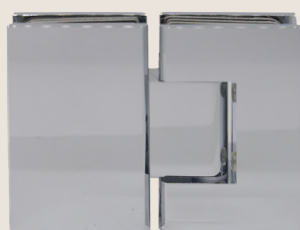
**2 Hinges:**  
3/8" Glass 110 lbs 36" W | 1/2" Glass 110 Lbs 36" W

**3 Hinges:**  
3/8" Glass 140 lbs 36" W | 1/2" Glass 140 Lbs 36" W



ITEM NO.PL-TSHD180BN

*Brushed Nickel*  
Glass Thickness 3/8" up to 1/2"



ITEM NO.PL-TSHD180CH

*Polished Chrome*  
Glass Thickness 3/8" up to 1/2"



ITEM NO.PL-TSHD180ORB

*Oil Rubbed Bronze*  
Glass Thickness 3/8" up to 1/2"



ITEM NO.PL-TSHD180MB

*Matte Black*  
Glass Thickness 3/8" up to 1/2"



Custom Shower Unit with Heavy Duty 180 Sydney Hinges

# OFFSET BACK PLATE HINGE

Our Sidney 135° glass to glass heavy duty hinge holds more weight and allows for a greater door width compared to the Sade series hinge. Gaskets are included. Glass requires fabrication. See hinge capabilities.

<b>2 Hinges:</b>	
3/8" Glass 100 lbs 34" W	1/2" Glass 100 Lbs 32" W
<b>3 Hinges:</b>	
3/8" Glass 130 lbs 34" W	1/2" Glass 130 Lbs 32" W



ITEM NO. PL-TSHD044BN

*Brushed Nickel*  
Glass Thickness 3/8" up to 1/2"



ITEM NO. PL-TSHD044CH

*Polished Chrome*  
Glass Thickness 3/8" up to 1/2"



ITEM NO. PL-TSHD044ORB

*Oil Rubbed Bronze*  
Glass Thickness 3/8" up to 1/2"



ITEM NO. PL-TSHD044 MB

*Matte Black*  
Glass Thickness 3/8" up to 1/2"

## SIDNEY HD SERIES



*90 Degree Steam Unit with Heavy Duty Short Plate Sydney Hinges*

# SUPPORT ELEMENTS

Safety should be the main priority while installing a frameless shower unit. PRL SD Units are strengthened by a variety of exposed support elements that provide an alternative for a clean frameless appearance.



*Shower Unit with Black Matte Aluminum Header and Sade Hardware*

## SUPPORT ELEMENTS



Aluminum Header



U-Channels



Glass Corbels

All support elements include applications for:  
Header: Wall Mount , 90° Units, 135° Units & In-Line Sections  
Support Bar: 90° Units, 135° Units & Neo-Angle  
Clamps :Surface Mount, 90°/135°/180° Fixed Glass to Glass,  
135° Units, 180° Units, Tilt Transom & Fixed Sidelite

Available finishes Headers / U-Channels,

- Plated Nickel (polished & brushed)
- Bright or Brushed Dip Clear
- Oil rubbed bronzed
- Matte Black

Available finishes Support Bar/Clamps\*

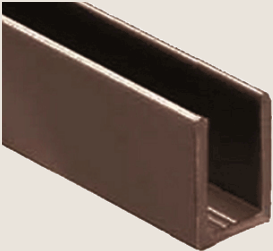
### SIDELITES SUPPORT ELEMENTS:

- Sidelines are intended to provide structural integrity to the unit
- It carries the load of the door
- Header must be used for safety and functionality support.
- Supporting the size and weight of the sidelite panel itself.
- Withstanding loads related to people leaning into the panel. Especially when a panel is installed in a high traffic area.

# U-CHANNELS

Aluminum u-channels for securing fixed panels of glass to the wall, ceiling, or floor, include our channel with notched bottom for greater installation strength. All screws should be glazed with clear silicone to prevent water infiltration. Standard 98" (2.49 M) lengths.

## 3/8" GLASS



ITEM NO. 38UCHSLORB

*Oil Rubbed Bronze  
Glass Thickness 3/8"*



ITEM NO. 38UCHSLMB

*Matte Black  
Glass Thickness 3/8"*



ITEM NO. 38UCHSLBN

*Brushed Nickel  
Glass Thickness 3/8"*



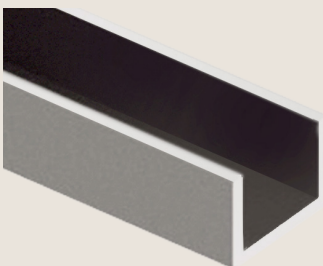
ITEM NO. 38UCHSLCH

*Polished Chrome  
Glass Thickness 3/8"*



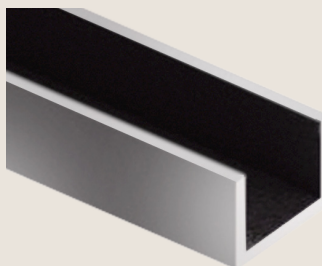
*In-Line Shower Unit with Oil Rubbed Bronze Header*

## 1/2" GLASS



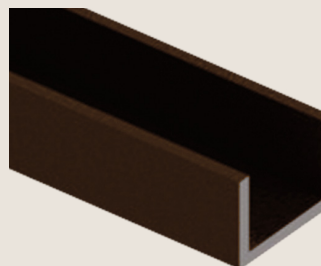
ITEM NO. 12UCHSLBN

*Brushed Nickel  
Glass Thickness 1/2"*



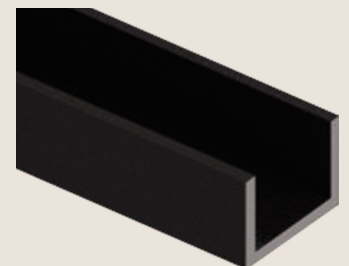
ITEM NO. 12UCHSLCH

*Polished Chrome  
Glass Thickness 1/2"*



ITEM NO. 12UCHSLORB

*Oil Rubbed Bronze  
Glass Thickness 1/2"*



ITEM NO. 12UCHSLMB

*Matte Black  
Glass Thickness 1/2"*



*Shower Unit with Header Oil Rubbed Bronze U-Channels*

## U-CHANNEL



*90 Degree Shower Unit with Matte Black U-Channels*

## U-CHANNEL



*In-Line Shower Unit with Matte Black U-Channels and Headers*

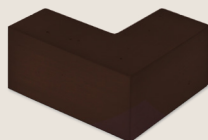


*Shower Unit with Brushed Nickel U-Channels*

# SLEEVE OVER

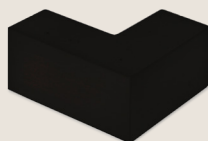
90 Degree and 135 Degree Sleeve over clamp. No glass fabrication needed for this 90° sleeve over clamp. Just slide clamp onto corner and tighten 2 small hex screws. Made out of solid brass material, overall weight 8oz.

## 90 DEGREES



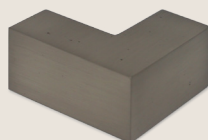
ITEM NO. PL-90SOORB

*Oil Rubbed Bronze*  
3/8" & 1/2" Glass Thickness



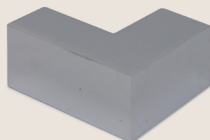
ITEM NO. PL-90SOMB

*Matte Black*  
3/8" & 1/2" Glass Thickness.



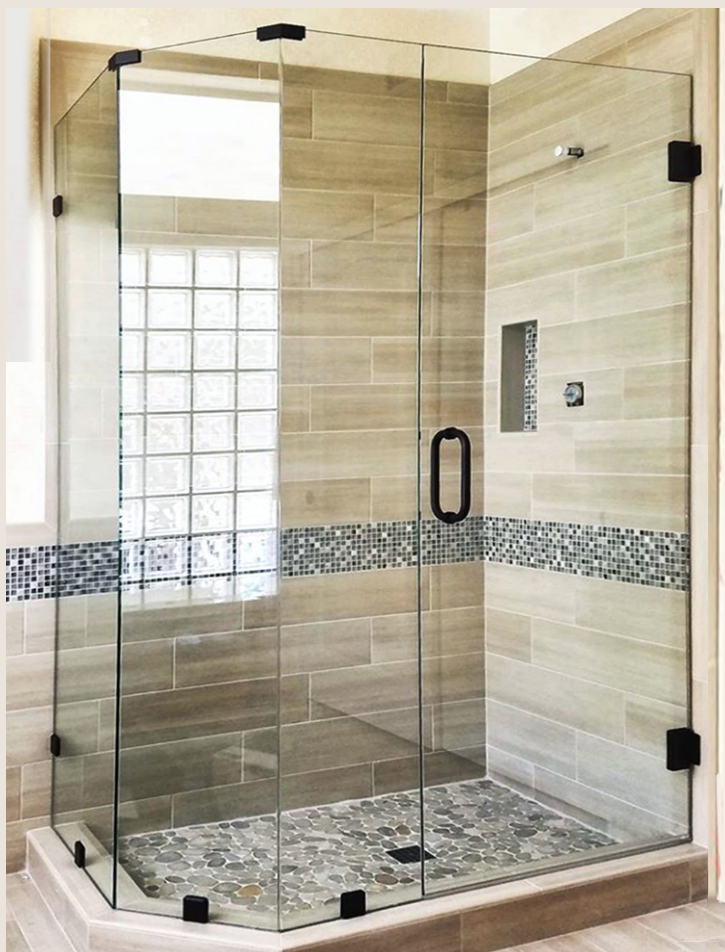
ITEM NO. PL-90SOBN

*Brushed Nickel*  
3/8" & 1/2" Glass Thickness



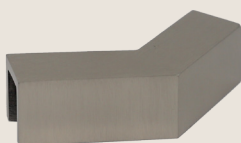
ITEM NO. PL-90SOCH

*Polished Chrome*  
3/8" & 1/2" Glass Thickness



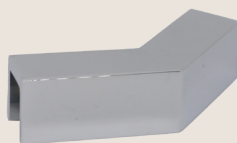
135-Degree Shower Unit with Black Matte Sleeve Over

## 135 DEGREES



ITEM NO. PL-135SOBN

*Brushed Nickel*  
3/8" & 1/2" Glass Thickness



ITEM NO. PL-135SOCH

*Polished Chrome*  
3/8" & 1/2" Glass Thickness



ITEM NO. PL-135SOORB

*Oil Rubbed Bronze*  
3/8" & 1/2" Glass Thickness.



ITEM NO. PL-135SOMB

*Matte Black*  
3/8" & 1/2" Glass Thickness



*Shower Unit with Matte Black 90 Degree Sleeve Over Clamp*

# 135° SLEEVE OVER



*Neo -Angle Shower Unit with 135 Degree Sleeve Over Clamp*

# 90° SLEEVE OVER



*Shower Unit with Sleeve -Over Clamp in Brushed Nickel*

# SEALS

Steam and water leaks are minimized with the use of clear polycarbonate and/or vinyl profiles. It is offered in various shapes to fit almost any condition. It does not ensure a leak-proof shower. See the various options PRL has to offer on different applications



*90 Degree Shower Unit with Bottom Swipe Polycarbonate Door Seal*

# SEALS



ITEM NO. PL-38RWS / PL-12RWS

*Rail & Wipe Polycarbonate Seal  
3/8" and 1/2" Glass*



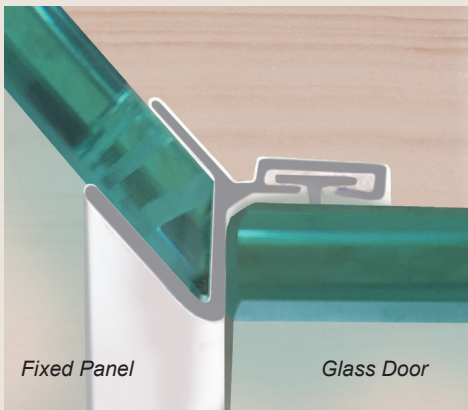
ITEM NO. PL- 38BSSL / PL- 12BSSL

*Bottom Swipe Polycarbonate Seal  
3/8" and 1/2" Glass*



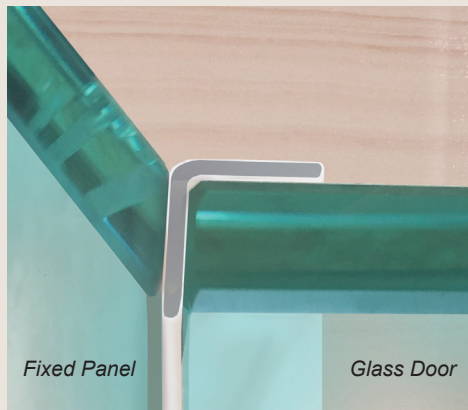
ITEM NO. PL-TSL

*T-Seal Polycarbonate Seal  
3/8" and 1/2" Glass*



ITEM NO. PL-135SJS

*135° Polycarbonate Strike & Jamb  
3/8" and 1/2" Glass*



ITEM NO. PL-SDTL

*Door Strike Polycarbonate L Jamb  
1/2" Glass*



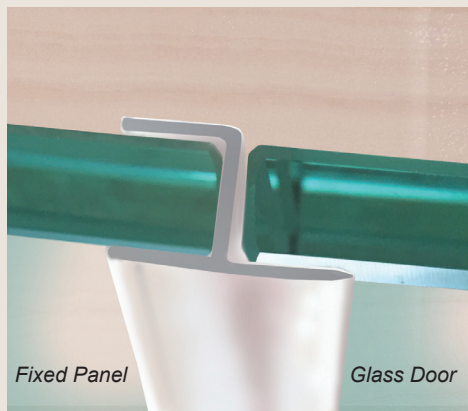
ITEM NO. PL-DBLTSL

*Double Fin Seal Polycarbonate Seal  
3/8" and 1/2" Glass*



ITEM NO. PL-180SDJ

*180° Polycarbonate Strike Door  
3/8" Glass*



ITEM NO. PL-38SJS / PL-12SJS

*Multi Purpose Polycarbonate H Stripe Jamb  
3/8" and 1/2" Glass*



ITEM NO. PL-BSLSL

*Bulb Seal Polycarbonate  
3/8" and 1/2" Glass*

# RUBY SHOWER SLIDER



*90 Degree Custom Stainless Steel Ruby Shower Slider*

# RUBY SHOWER SLIDER

---

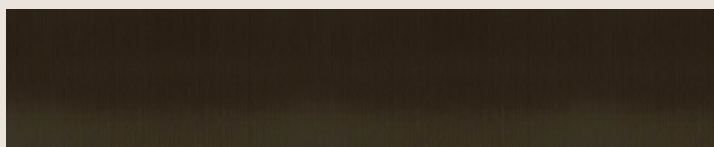
The Ruby system offers a sleek, modern look for a high end design. This stunning all-glass Ruby shower slider will take your breath away with its frameless, round support bar, cutting-edge, design and easy, smooth operation.

Featuring a stylish 60" round support bar, multiple 3/8" glass options to choose from and a modern 4-wheel roller system, the Ruby combines both form and function. Maximum door weight is 130 lbs.



---

*Polished Stainless Steel Hardware Finish  
3/8" Glass Thickness. Standard Lengths 98".*



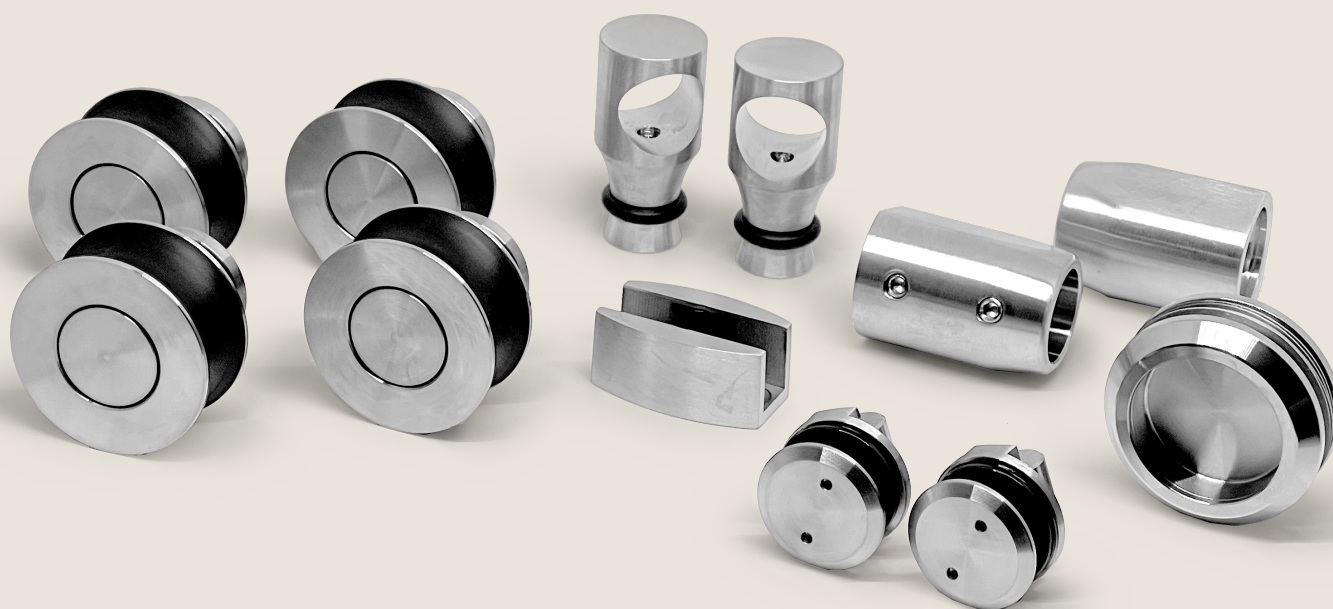
---

*Oil Rubbed Bronzed Slider Hardware Finish  
3/8" Glass Thickness. Standard Lengths 98".*



---

*Brushed Stainless Steel Slider Hardware Finish  
3/8" Glass Thickness. Standard Lengths 98".*



## RUBY SHOWER SLIDER



*Ruby Shower Slider in Polished Stainless Steel*

## RUBY SHOWER SLIDER



*Ruby Shower Slider in Brushed Polished*

# TIFFANY SHOWER SLIDER



*Custom 90 Degree Tiffany Shower Slider in Polished Stainless Steel*

# TIFFANY SHOWER SLIDER

---

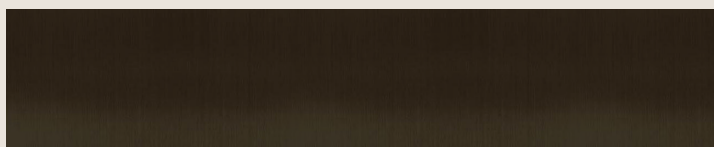
Rectangular support bar frameless shower slider, offering practicality as well as sophistication, the Tiffany features a modern 4-wheel roller system, a fashionable rectangular sliding track and multiple glass options to choose from.

Frameless, trendsetting design and smooth, effortless operation, 3/8" Clear Tempered Glass, Center Seal, Half Round Threshold and (2) Wall Mount Clamps. Maximum door weight is 130 lbs.



---

*Polished Stainless Steel Hardware Finish  
3/8" Glass Thickness. Standard Lengths 98".*



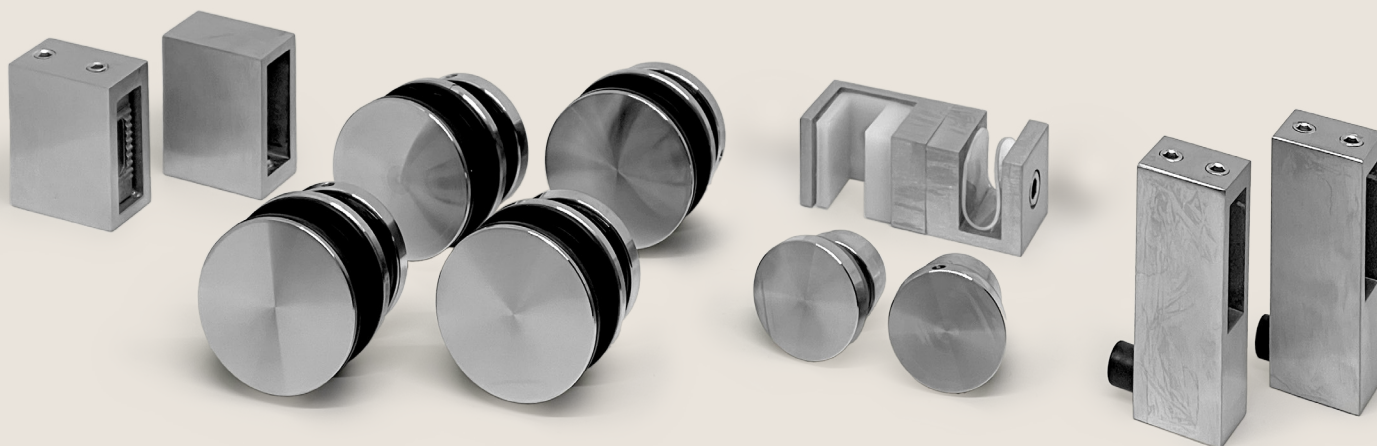
---

*Oil Rubbed Bronzed Slider Hardware Finish  
3/8" Glass Thickness. Standard Lengths 98".*



---

*Brushed Stainless Steel Slider Hardware Finish  
3/8" Glass Thickness. Standard Lengths 98".*



## TIFFANY SHOWER SLIDER



*In-Line Tiffany Shower Slider in Oil Rubbed Bronze*

## TIFFANY SHOWER SLIDER



*Custom Shower Slider with Brushed Nickel*

# BIPASS TIFFANY SD SLIDER



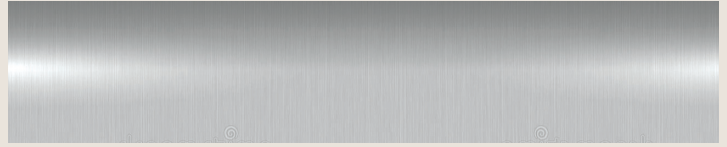
*Bypass Shower Slider in Brushed Nickel Finish*

## BIPASS TIFFANY SHOWER SLIDER

---

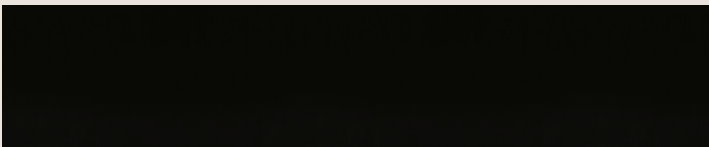
With entry from either side, our frameless system brings ease of use to tub and shower enclosures. Equipped with four-wheel rollers and stylish rectangular sliding tracks in 60" – 72" lengths or custom, these doors have a lot to offer.

Our frameless sliders can be rendered up to 84" in height and max weights up to 84 lbs. per panel. Accepting 3/8" thickness only, we fabricate a huge scope of glass types. Beautiful in your home, our new Tiffany shower sliders are available in a diverse array of glass types and finishes.



---

*Polished Stainless Steel Hardware Finish  
3/8" Glass Thickness. Standard Lengths 98".*



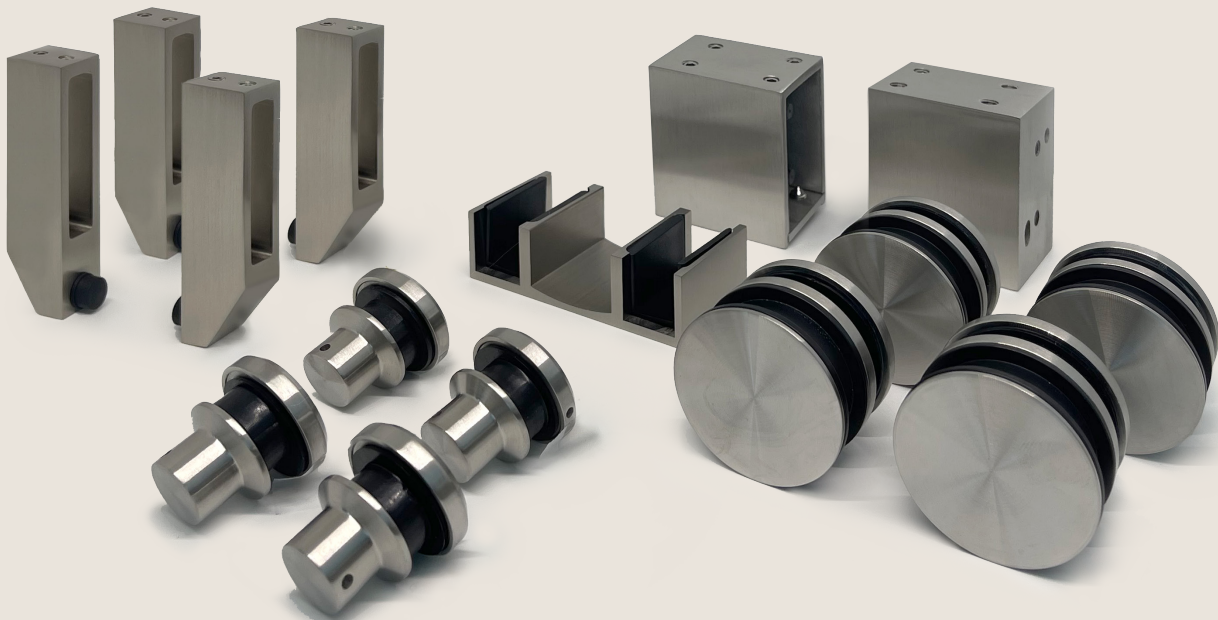
---

*Matte Black Slider Hardware Finish  
3/8" Glass Thickness. Standard Lengths 98".*



---

*Brushed Stainless Steel Slider Hardware Finish  
3/8" Glass Thickness. Standard Lengths 98".*



## BIPASS TIFFANY SHOWER SLIDER



*Bypass Shower Slider in Stainless Steel Finish*

## BIPASS TIFFANY SHOWER SLIDER



*Bypass Shower Slider in Oil Rubbed Bronze Finish*

## FRAMELESS SHOWER SLIDER APPLICATIONS



*Polished Stainless Steel Ruby Shower Slider*



*Oil Rubbed Bronze Ruby Shower Slider*



*Brushed Nickel Ruby Shower Slider*



*Brushed Nickel Bipass Frameless Shower Slider*

# FRAMELESS SHOWER SLIDER APPLICATIONS



*Oil Rubbed Bronze Tiffany Shower Slider*



*Brushed Nickel Tiffany Shower Slider*



*Polished Stainless Steel Bypass Shower Slider*



*Brushed Nickel Tiffany Shower Slider*

# CUSTOM SHOWER UNITS

Offering only the finest shower glass customizations, our gifted artists can turn your shower and bath into a spectacular showcase. We can produce jaw dropping custom limitless range of custom shower glass. We can also manufacture custom shower hardware to your exact specifications. Extruding virtually all shower hardware in-house, we can meet your desires and needs.



*Custom Tiffany Slider with U-Channels*

## CUSTOM SHOWER UNITS



*Oversized Custom Ruby Shower Slider*



*Custom Oversized Steam Unit*



*Custom Tinted Glass Shower Unit*

## CUSTOM SHOWER UNITS



*Custom Oversize Steam Unit with Diamond Seal Shower Glass*

## CUSTOM SHOWER UNITS

---



*Custom 90 Degree Shower Unit with U-Channel Framing*

## CUSTOM SHOWER UNITS



*White Laminated Glass Custom Slider Toilet Partition*

## CUSTOM SHOWER UNITS



*Shower Partitions with Custom Wave Glass*

# STALLS & PARTITIONS

PRL's Restrooms stalls & Partitions is a completely custom product designed specified for our customer needs. We unlimited configurations these will totally redefine the privacy needed while adding distinctive unique look to every restroom.

Our stalls are available multiple types of glass fabrication like textured glass, Rainbow Color Laminated glass, Decorative Laminated Glass, and custom sandblast. You can order our restroom partitions in a wide array of colors and patterns. This variety makes it simple to create a bathroom that reflects the look and match the rest of the perimeters.



*Double Custom Slider for Shower and Restroom Partition*

## STALLS & PARTITIONS



*Custom Restroom Stalls with 66% Laminated Glass*

## STALLS & PARTITIONS



*Single Door Units with Custom White Laminated Glass*

## STALLS & PARTITIONS



*Clear Tempered All Glass Restroom Stalls*



*Acid Etched Texture Glass Restroom Partitions*



*Custom Sandblast and Gluechip Single Stalls*



*Double Door Stalls with Custom Sandblast Design*

# PULL & HANDLE SERIES

Ranging in styles from our standard C pulls to our Contemporary handle and Ladder pulls. Our shower door handles are a cut above the rest. Fabricated with the finest craftsmanship using high quality brass, you're sure to find the right accent to compliment your shower door.



*90 Degree Shower Unit with 8" C-Pull in Black Mate*

# C-PULLS

PULLS SERIES

For a simple, yet elegant look, our Standard handle is what you're looking for. With a rectangular tubing shape and rounded edges this shower door handle is the most popular. Pull available height 6" and 8". The tubular c-pull with 3/4" Diameter.



ITEM NO. PL-3SD6BN  
ITEM NO. PL-3SD8BN

*Brushed Nickel*  
Glass Thickness 1/4" up to 1/2"



ITEM NO. PL-3SD6CH  
ITEM NO. PL-3SD8CH

*Polished Chrome*  
Glass Thickness 1/4" up to 1/2"



ITEM NO. PL-3SD6ORB  
ITEM NO. PL-3SD8ORB

*Oil Rubbed Bronze*  
Glass Thickness 1/4" up to 1/2"

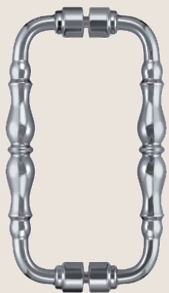


ITEM NO. PL-3SD6MB  
ITEM NO. PL-3SD8MB

*Matte Black*  
Glass Thickness 1/4" up to 1/2"

# CONTEMPORARY PULLS

Contemporary style 8" back to back pull handle. If delicate grandeur and distinction is what you seek, look no further. PRL has delivered once again. Designed with beautifully ornate fine detailing and the finest craftsmanship the contemporary back-to back pull handle was born. A truly must see!



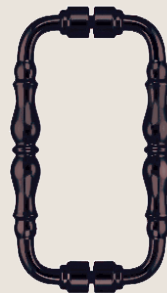
ITEM NO. PL-CTPBN

*Brushed Nickel*  
Glass Thickness 3/8" & 1/2"



ITEM NO. PL-CTPCH

*Polished Chrome*  
Glass Thickness 3/8" & 1/2"



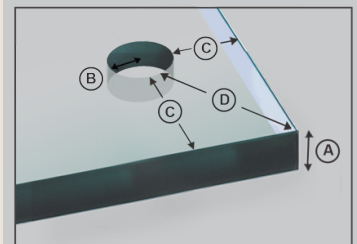
ITEM NO. PL-CTPORB

*Oil Rubbed Bronze*  
Glass Thickness 3/8" & 1/2"

## HOLE FABRICATION:

Some hardware may require fabrication, Handles, knobs, and towel bars on a frameless shower enclosure are commonly attached with holes through the glass.

Glass Thickness (A)	Minimum Hole Size (B).	Minimum Distance from Edge (C)	Minimum 45° Diagonal Distance to Corner(D)
3/8"	3/8"	9/16"	2 7/16"
1/2"	1/2"	3/4"	3 1/4"



## HANDLE APPLICATIONS



*Shower Unit with C-Pull in Polished Chrome*

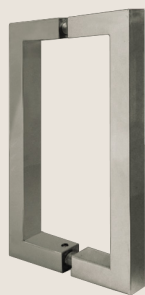
## HANDLE APPLICATIONS



*Custom Shower Unit with Mini Ladder Pulls*

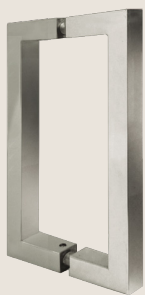
# SQUARE PULLS

Square style 8" back to back pull handle. The modern appearance of this handleset comes from the clean, sharp lines and right angles. This 8" Pull is made of 3/4" square brass tubing.



ITEM NO. PL-SQ8X8BN

*Brushed Nickel*  
Glass Thickness 3/8" & 1/2"



ITEM NO. PL-SQ8X8CH

*Polished Chrome*  
Glass Thickness 3/8" & 1/2"



ITEM NO. PL-SQ8X8ORB

*Oil Rubbed Bronze*  
Glass Thickness 3/8" & 1/2"



ITEM NO. PL-SQ8X8MB

*Matte Black*  
Glass Thickness 3/8" & 1/2"



*In-line Shower Unit with Matte Black Square Pull*

## HANDLE APPLICATIONS



*Neo-Angle Shower Unit with Square Pull*

## HANDLE APPLICATIONS



*Steam Unit with Polished Chrome Mini Ladder Pull*

# MINI LADDER PULL

PULLS SERIES

PRL's Mini Ladder pull handle provides a unique and bold look to compliment your décor. With sleek 3/4" diameter tubing, this handle is sure to highlight your shower door. Two 1/2" holes are required. Ladder Pulls are 8" center to center and 12" over all.



ITEM NO. PL-MLPBN

*Brushed Nickel*  
Glass Thickness 1/4" up to 1/2"



ITEM NO. PL-MLPCH

*Polished Chrome*  
Glass Thickness 1/4" up to 1/2"



ITEM NO. PL-MLPORB

*Oil Rubbed Bronze*  
Glass Thickness 1/4" up to 1/2"



ITEM NO. PL-MLPMB

*Matte Black*  
Glass Thickness 1/4" up to 1/2"

## CUSTOM PULLS

At PRL Glass Systems we have the capability to manufacture custom shower door pulls for all our shower styles. Simply provide us with your commercial door handle design and we will take care of the rest. PRL custom shower pulls will offer an elegant and unique touch to your entrance door system. Our custom pulls are available in a variety of finishes, mixed colors, diameters, sizes and shapes. The degree of difficulty of the custom pulls is not a problem for PRL. Curved, S-shaped, Tubular or Geometric shapes...PRL will accept the challenge!



## CUSTOM HANDLE APPLICATIONS



*Shower Unit with Custom Pull Handle in Polished Chrome*

## CUSTOM HANDLE APPLICATIONS



*90 Degree Shower Unit with Custom Vent*

# KNOB SERIES

From the most intricately cut glass to unmistakable simplicity, PRL is also proud to offer a full line of shower hardware including stylish back to back door knobs. Various styles are available in brushed nickel, polished chrome and oil rubbed bronze. Once again, PRL accommodates your every need and style of decor.



*Inline Shower Unit with Beverly Shower Knobs*

# BTB SHOWER KNOB

KNOB SERIES

With beautifully beveled edges and subtle accents, our Traditional shower door knob exudes style and refinement. Combine them with our exclusive shower door hinges and clamps. PRL is your single source supplier for complete shower enclosures.



ITEM NO. PL-KNOBBN

*Brushed Nickel Knob  
1/4" up to 1/2" Glass Thickness*



ITEM NO. PL-KNOBCH

*Polished Chrome Knob  
1/4" up to 1/2" Glass Thickness*



ITEM NO. PL-KNOBORB

*Oil Rubbed Bronzed Knob  
1/4" up to 1/2" Glass Thickness*

## BEVERLY KNOB

With a ribbed standoff design, our contemporary back to back Beverly knobs will enhance any shower. From elegant simplicity to the most modern decor, PRL's selection of shower door knobs will satisfy everyone's taste!



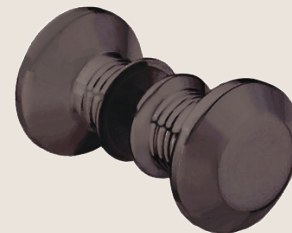
ITEM NO. PL-BKBN

*Brushed Nickel Sliding Knob  
1/4" up to 3/8" Glass Thickness.*



ITEM NO. PL-BKCH

*Polished Chrome Sliding Knob  
1/4" up to 3/8" Glass Thickness.*



ITEM NO. PL-BKORB

*Oil Rubbed Bronzed Sliding Knob  
1/4" up to 3/8" Glass Thickness.*

# SINGLE-SIDED KNOB

Traditional in style, our single-sided sliding shower door knobs are ideal for use on bypass shower doors.



ITEM NO. PL-KDBN

*Brushed Nickel Single Knob  
1/4" up to 1/2" Glass Thickness.*



ITEM NO. PL-KDCH

*Polished Chrome Single Knob  
1/4" up to 1/2" Glass Thickness.*



ITEM NO. PL-KDBN

*Brushed Nickel Single Knob  
1/4" up to 1/2" Glass Thickness.*

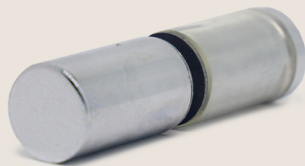
# SLIDING KNOB

Our Back-to-Back sliding door knobs are perfect for single sliding doors. Functional design underlines uncompromised simplicity with exemplary craftsmanship.



ITEM NO. PL-KDDBN

*Brushed Nickel Sliding Knob  
1/4" up to 1/2" Glass Thickness.*



ITEM NO. PL-KDDCH

*Polished Chrome Sliding Knob  
1/4" up to 1/2" Glass Thickness.*



ITEM NO. PL-KDDORB

*Oil Rubbed Bronzed Sliding Knob  
1/4" up to 1/2" Glass Thickness.*



PRL brings you our Slider shower door knob series in an effortless, smooth, and cylindrical design. Sliding knobs featuring gentle rounded edges design, PRL Glass makes the grade with protective plastic sleeve quality you've come to expect from PRL Glass.



*Shower Slider with Sliding Knob and Towel Bar*

# TOWEL BARS SERIES

PRL Glass is proud to offer expertly fabricated single sided (S/S) and standard shower door towel bar combinations. With both form and function in mind our rounded, tubular, design conveys a clean modern style that will effortlessly accentuate your shower doors and bath.



*Shower Unit with Polished Chrome Towel Bar*

## TOWEL BARS SERIES



*90 Degree Frameless Tiffany Slider with 18" Oil Rubbed Bronze Towel Bar*

# TOWEL BAR

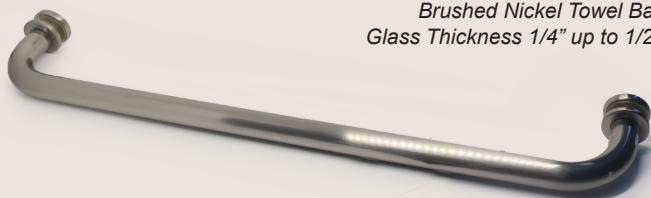
Simple, yet functional beyond a fault, our single sided shower towel bar. Available 18" or 24"  
Single sided towel bar with metal washers, is crafted from select 3/4" brass tubing to create unrestricted function and subdued style.



*In-Line Tiffany Frameless Slider with 24 inch Towel Bar*

ITEM NO. PL-18SSTBBN | PL-24SSTBBN

*Brushed Nickel Towel Bar.  
Glass Thickness 1/4" up to 1/2".*



ITEM NO. PL-18SSTBCH | PL-24SSTBCH

*Polished Chrome Towel Bar .  
Glass Thickness 1/4" up to 1/2".*



## TOWEL BAR



*90-Degree Ruby Frameless Slider with 24 inch Towel Bar*

ITEM NO. PL-18SSTBORB | PL-24SSTBORB

*Oil Rubbed Bronze Towel Bar.  
Glass Thickness 1/4" up to 1/2".*



ITEM NO. PL-18SSTBMB | PL-24SSTBMB

*Matte Black Towel Bar.  
Glass Thickness 1/4" up to 1/2".*



# COMBO TOWEL BAR

Modern style and simplicity, PRL's combination Towel Bar is suitable for all types of surfaces. This set that consists of a pull handle and towel bar, along with decorative metal back-up washers and plastic protective washers to protect against glass-to-glass contact.



*90 Degree Frameless Shower Unit with Polished Chrome Combination Towel Bar*

# TOWEL BAR



135 Degree Shower Unit with Polished Chrome Combo Towel Bar



ITEM NO. PL8SD618BN | PL8SD624BN

*Brushed Nickel Pull and Towel Bar.  
Glass Thickness 3/8" & 1/2".*



ITEM NO. PL8SD618CH | PL8SD624CH

*Polished Chrome Pull and Towel Bar.  
Glass Thickness 3/8" & 1/2".*



Shower Unit with Brushed Nickel Combo Pull Bar



ITEM NO. PL8SD618ORB | PL8SD624ORB

*Oil Rubbed Bronze Pull and Towel Bar.  
Glass Thickness 3/8" & 1/2".*

## TOWEL BAR



*90-Degree Shower Unit with Oil Rubbed Bronze Combo Towel Bar*

## TOWEL BAR



*90-Degree Shower Unit with Custom Square Combination Towel Bar*

# DIAMOND SEAL GLASS

Want to protect and keep your shower glass looking radiant? We've got your back. PRL offers Diamond Seal shower glass coating. This protective coating will keep your shower and bath looking gorgeous and easy to maintain. What more could you ask for?

Not only for shower enclosures, PRL's shower glass options can be used for an array of shower and bath applications. Outfit steam units, splash panels, shower partitions and splash back walls with any of our shower glass types, or apply Diamond Seal coating to create shower products that will last as long as they enchant.

NOTE: Diamond Seal is not a self cleaning product, but protects the surface from harsh chemicals and minerals that damage glass.



*In-line Shower Unit with Diamond Seal Shower Glass*

## DIAMOND SEAL GLASS



*Frameless Shower Unit with Diamond Seal Shower Glass*

## DIAMOND SEAL GLASS



*Custom Oversize 90-Degree Shower Unit with Diamond Seal Shower Glass*

## DIAMOND SEAL GLASS



*Diamond Seal Shower Glass Unit*



*Custom Steam Unit with Diamond Seal Shower Glass*

Diamond Seal improves the clear bright and sparkling new glass appearance.

Resists staining and discoloration caused by limescale & hard water stains.

Maintenance is simple since washing is cut in half with a squeegee & enhanced with a conditioner to prolong DS life.

Eliminates tedious harsh and abrasive glass cleaning methods that cause chemical attack and physical damage on glass.

Contact the coating manufacturer for appropriate cleaning instructions. Coatings can be damaged by using unapproved cleaning products.

# GLASS SELECTION

In some instances will require discrete privacy on shower and steam units. At PRL, we offer an alluring selection of textured and patterned shower glass to add privacy and elegance to sliding and swing shower door systems. Also excellent for steam units, restrooms stalls, splash panels and shower partitions, our textured and patterned shower glass has a lot to offer. Various 5/16" – 3/8" tempered glass patterns are available to choose from. A host of textured glass options and low iron glass patterns, we furnish an impressive array of premium quality heavy shower glass.



*Neo -Angle Shower Unit with Gluechip Glass*

## GLASS SELECTION



*Ruby Shower Slider with Acid Etched Glass*

## GLASS SELECTION



*Tiffany Frameless Shower Slide with Rain Glass*

# GLASS SELECTION



Single Shower Doors with Acid Etched Glass & Clear Shower Glass

## Texture Glass Selection:



**MASTER-RAY**  
5/16"



**MASTER-POINT**  
5/16"



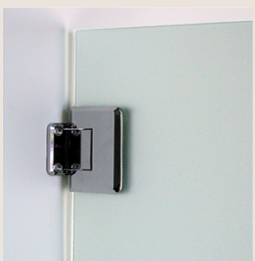
**SANDBLASTED**  
3/8", 1/2"



**BUBBLE**  
3/8"



**RAIN**  
3/8"



**LOW IRON ACID ETCH**  
3/8", 1/2"



**ACID ETCH/MATTE**  
3/8", 1/2"



**GLUECHIP**  
3/8", 1/2"



**CUSTOM SANBLAST**  
3/8", 1/2"



**CUSTOM GLUECHIP**  
3/8", 1/2"

## GLASS SELECTION



*In-Line Shower Unit with a Back Splash Acid Etch Glass Panel*

## GLASS SELECTION



*Outdoor Shower Units with Acid Etch Texture Glass*



*Neo-Angle Shower with Rain Textured Glass*

## GLASS SELECTION

PRL recommends to always install textured glass with the smooth side facing inside the shower. Also take considerations on the hardware and U-channels when using patterned glass or cast glass.



*Single Door Shower Units with Matte Acid Etched Glass*

## GLASS SELECTION



*Shower Glass Partition with Rain Texture Glass*



*Gluechip Texture Shower Unit*



*Frameless Gluechip Shower Double Glass Partitions*



*Acid Etched Texture Glass Unit with Double Vent Cut-outs*

# CUSTOM GLASS FABRICATION

Customize your frameless shower enclosure with the shower details, necessary cut-outs, glue chipped borders and patterns. Imagine the possibilities with an unlimited selection of awe-inspiring custom sandblasted glass designs. Available in a variety of thicknesses for frameless shower door sliders and swing door shower systems, we offer something for everyone.



*Oversize Shower Unit with Custom Cut-out Vents*

## CUSTOM GLASS FABRICATION



*90 Degree Shower Unit with Custom Vent Cut-out*

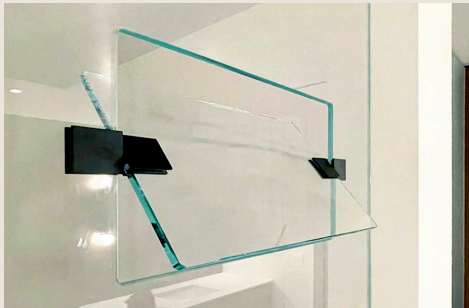
# CUSTOM GLASS FABRICATION



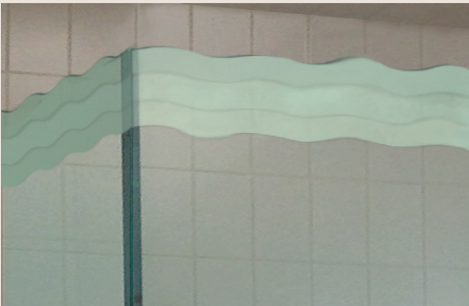
Custom Unit with Arched Top and Wave Shower Double Doors



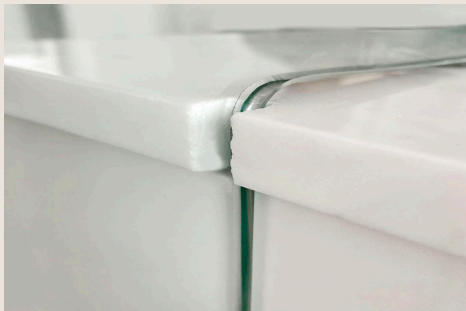
CUSTOM VENT CUTOUT



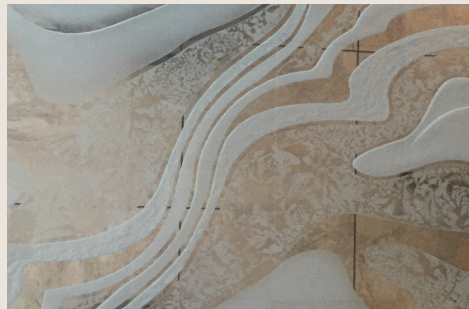
CUSTOM TRANSOM CUTOUT



OCEAN SURF TOP



CORNER CUTOUT DETAIL



GLUECHIP GLASS



TILE NOTCH



SEAMLESS MITER CORNER

## CUSTOM GLASS FABRICATION



*Steam Shower Unit with Custom Vent Cut-Out*

## CUSTOM GLASS FABRICATION



*Oversize Shower Unit with Custom Arched Top*

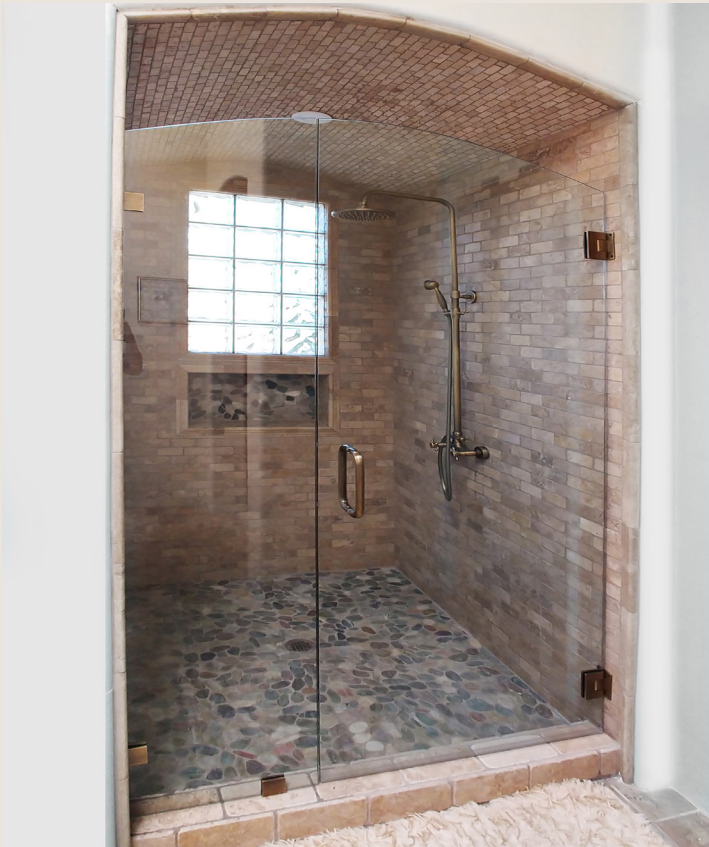
## CUSTOM GLASS FABRICATION



*Single Door Shower Unit with Custom Cut-out Vent*



*Custom Shower with Custom Fixed Transom*



*Custom Arched Top Single Door Shower Unit*



*Shower Unit Cut to Curved Corner Patterns*

# SANDBLAST

PRL Sandblast artwork enhances glass elegance with surface or deep carved custom artwork designs such as, logos applications, floral, abstract, mythical concepts, ornamental design or contemporary designs. Elaborate concepts can be applicable in all of our shower unit/slider line.

PRL Designers/Artists are available to assist you with your design work through an extensive computer and hand drawn graphics/images.



*Shower Glass Partition with Custom Sandblast Design*

## CUSTOM SANDBLAST GLASS



*Artistic Application*



*Logo Application*



*Contemporary Sandblast Design*



*Custom Sandblast & Gluechip Design*

## CUSTOM SANDBLAST GLASS



*Abstract Sandblast Design*



*Custom Decorative Design*



*Custom One Full Glass Piece with Cut-out Sandblast Design*

## CUSTOM SANDBLAST GLASS



*Steam Unit with Custom Gluechip Glass*

# SPANDREL WALL CLAD

PRL's Spandrel Glass continues to be a very popular design option for interior applications, particularly in Bathrooms! It is a perfect companion with an attractive color options and a convenient easy maintenance smooth surface specially when Diamond seal coating is applied. PRL stocks a full line of standard colors with a very fast lead time. An extensive line of custom colors are available upon request to color match to your specific.



*Shower Unit with White Spandrel White Splash Wall*

# SPANDREL WALL CLAD



Custom Color Splash Back Wall



Full Wall Mirror with Custom Light Cut-outs

# SPANDREL COUNTER TOPS



Custom Blue Counter top Cover



Lava Bronze Sink Countertop

## Standard Colors

#1-818 Black	#1-0016 Charcoal
#3-820 Harmony Gray	#3-0586 Medium Gray
#4-822 Harmony Bronze	#3-0770 Warm Gray
#6-0025 Harmony Blue	#3-747 Harmony Graylite#14
#2-743 Harmony Solex	#3-967 Black-Gray
#4-975 Lava Bronze	#4-0925 Neutral
#2-0225 Evergreen	
#0-0186 Light White	<b>Custom Colors</b>
#0-0020 Snow White	#2-0213 Aged Copper
#0-1060 Primary White	#6-0194 Fjord
	#5-936 Red

## SPANDREL WALL CLAD



*Wall Cover with White Spandrel*

## SPANDREL WALL CLAD



*Neo -Angle Shower Unit with Brushed Nickel Beverly Hardware*

# MIRRORS

PRL offers a full-service glass and mirror fabrication. We offer 1/4" Clear Mirrors or Low Iron Mirror (ultra-white with no tint, an incomparable clarity). When it comes to custom mirrors, PRL specializes in fabricating them to your specifications. The latest trend are mirrors with etching for back lighting or to create a seamless mirror wall.



*Full Size Custom Height Mirror*

# MIRRORS



*Full Wall Mirror with Custom Light Cut-outs*



*Custom Mirror with a Window Cut-out and for Lighting Installation*

## MIRRORS



*Custom Mirror Made up of Multiple Square Pieces*

## MIRRORS



*Custom Round Mirror with Back Lighting*



*Custom Mirror Cut to Pattern with Bevel Edge*



*Oversized Rectangular Mirror*

## MIRRORS



*Full Wall Mirror with Custom Back Lighting*



*Oversized Silver Mirror*

## MIRRORS



*Mirror with Sanblast Border for Back Lighting*



*Custom Mirror with Custom Mirror Border*

# MAX ALUMINUM SLIDER

*Complete Max' Aluminum Slider System Ready to be Install*



*Biparting Max Sliders with IG Units Glass*

## Features:

- Efficiency & Durability
- Elegance
- Smooth Sliding
- Views
- Weather Tight
- Hurricane Resistant
- Dual Tone Finish Feature

## Three Configurations:

- Cancun Bottom Roller
- Cabo Top Hung
- 90 Degree Corner Conf.

## Three Standard Stiles:

- 3" Locking Stile
- 1" Ultra Narrow Stile



*Multiple Aluminum Max Sliders*

# ACCORDION BI-FOLD

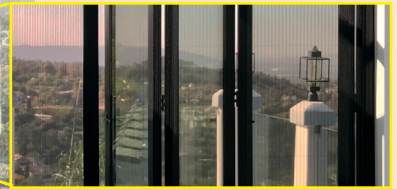
*Complete Accordion Bi-fold Aluminum System a Versatile Solution for Any Application*



## Features:

- Versatile
- Weather Resistant
- Thermally Broken
- In-line / Multiple Panels
- Custom Configurations
- Dual Function Slide/Bifold
- Dual Tone Finish Feature

## TACTICAL™ HORIZONTAL SCREEN



- Horizontal Retractable Mesh Screen
- Maximum 50 feet wide and 10 feet tall

*Residential Accordion Bifold with Tactical Horizontal Screen*



*Commercial Accordion Bifold in White Custom Paint*

PRL'S PRODUCT LINE

# TACTICAL™ HORIZONTAL SCREEN

*Ingenuity Made Simples Horizontal Retractable Screen*

## Features:

- Durable, high quality pleated PET (Polyethylene Terephthalate) Mesh Screen
- Up to 50 feet (15.2m) wide and 10 feet (3.05m) tall
- Easy interior or exterior installation, jamb or face mount
- Standard finishes: Black and White
- Custom colors available
- PVDF coating - architectural finish

PRL'S PRODUCT LINE



*Max Aluminum Slider with Tactical Horizontal Screen*

# ALUMI SLIDER

*Lighter Weight High Quality Modern Interior Aluminum Slider*

## Features:

- 2" Rollers
- Max weight capacity 220lbs per roller
- We can match any size top or bottom rail (up to 10")
- Size limitations 60" x 108"
- Interior application only
- Top hung or Bottom roller
- Muntin Bars

## Glass Options:

- 1/4", 3/8" 1/2" & 1"
- Tempered
- Laminated
- IG Units

## Door Styles

- Narrow Stile- 2"
- Medium Stile- 3 1/2"
- Wide Stile- 5 1/8"



*Conference Room Bi-Parting Alumi Slider with Sound Control Glass*

PRL'S PRODUCT LINE

# INTERIOR DOORS

This hardware brings elegance and security, peace of mind to many doors

## **SAMSON HINGE:** *interior or Exterior*

Per Pair

- Maximum Weight 170 lbs
- Maximum Door Width 45 in.
- Double- door action
- Fully covered screws
- Clip-on system



## **COVINA LOCK HOUSINGS:** *interior Door*

Center Lever Lock Housing:  
Euro style deadlatch lever handle  
Generous grip for hand safety  
Size: 3" X 4"



*Interior Doors with Custom Sandblast Glass, Samson Hinge & Covina Housing Lock*

**STUDIO LOCK HOUSINGS:**  
*interior or Exterior*

Perfect when higher security is needed and 7-pin. Lockset also offers mortise cylinder housing and without



*Interior Total View Door with Studio Lock Housing*

## WINE CELLARS

*Will provide you some safety and meet all requirements while transparency is still sustain*

PRL'S PRODUCT LINE



*Oversized All Glass Wine Cellar*



*Residential Custom Wine Cellar Bar*

Don't limit yourself to an ordinary wine cellar. Shop at PRL! We manufacture glass-enclosed wine cellars with limitless customization. Offered in several all-glass or aluminum swing door styles, or sliding doors. These units bring exquisite character to your client's vintages. All wine cellars are custom to your specifications whether you want an all-glass application or aluminum framing. Some Custom All-Glass Wine



*Frameless Wine Cellar*



*Custom Shape Glass Wine Cellar*

# TABLETOPS

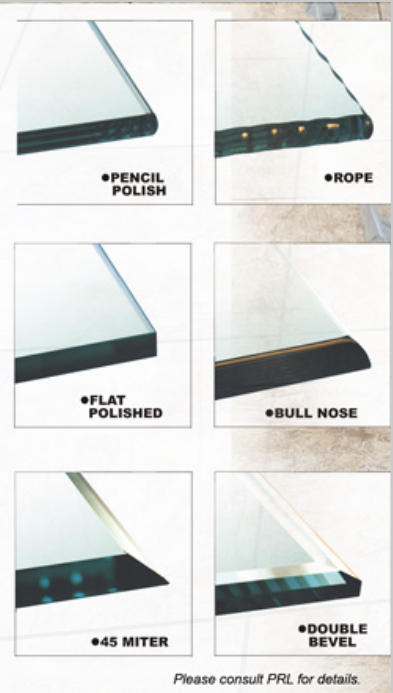
*Artistic, Beautiful, and Creative Applications for Residential and Commercial*

Tempered glass is always much more resistant to breakage than raw glass. Even if it breaks, the glass disintegrates into relatively small pieces, which is less likely to cause a serious injury. It is very common for glass doors, sidelites, balconies, etc.

***Oversize tempered glass  
available for  
110" x 189"***

*\*consult PRL for details.*

## CUSTOM EDGE WORK:



*Oversized Tabletop with Custom Sandblast Design and Glueship Glass*



*All Glass Tabletop with Custom Center Cut Out and Chipped Polished Edge*



*Oversized Conference Tabletop*

## GLASS SPECIALTIES

*Custom Work with Expert Craftsmanship Creating Elegance & Style*

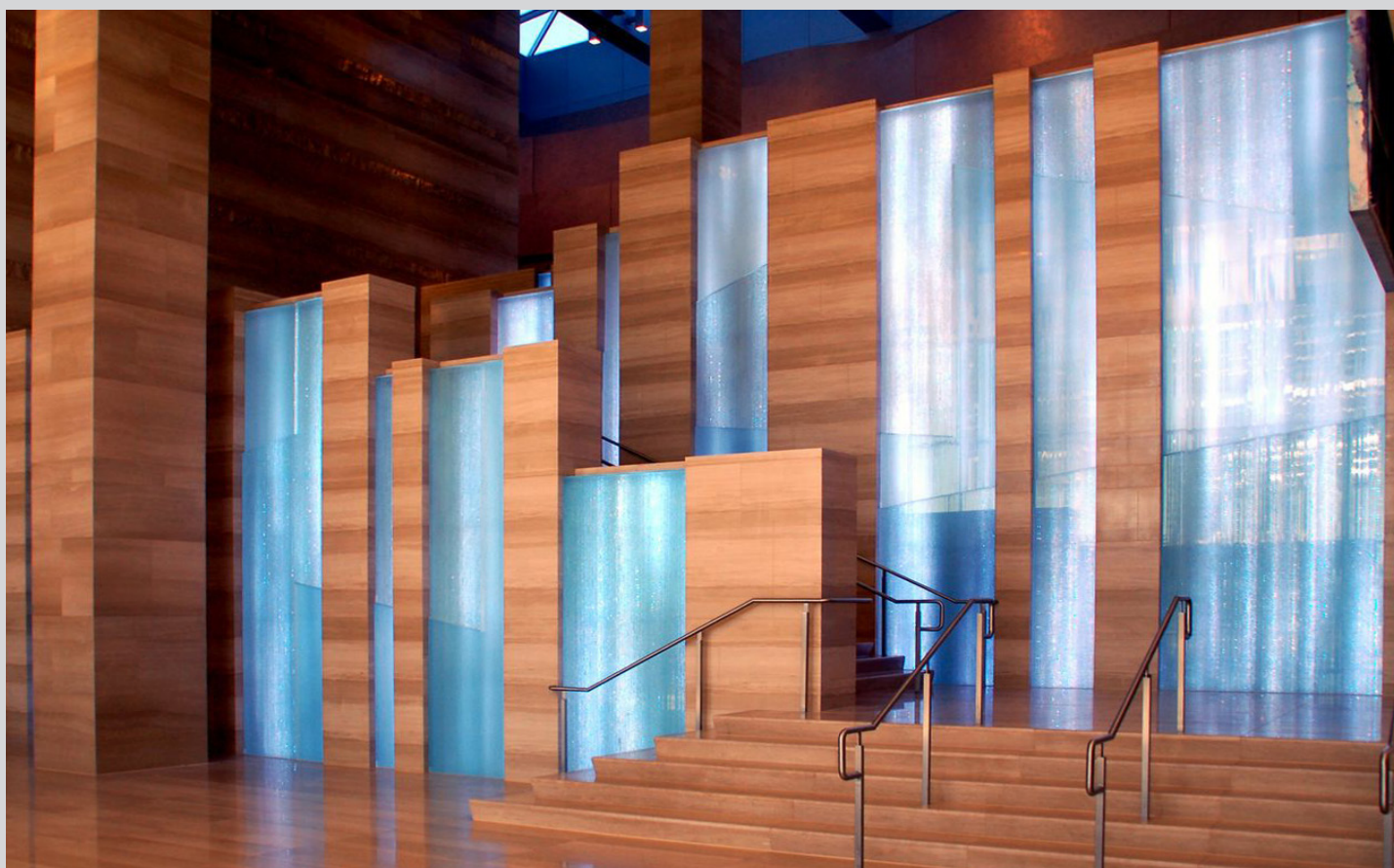


*Residential Custom Handrail Glass Cut to Pattern*

PRL custom glass fabrication is our area of expertise. Fabricated in-house by our master craftsmen. Utilizing cutting edge technology and our vast fabrication capabilities, we can generate a large assortment of complex geometric glass shapes, pattern cut-outs, hole diameters and intricate notching.

### **Fabricate the most unique glass pieces:**

- Oversized glass
- Surface and artistic carved sandblast glass
- Decorative glass wall
- Sandblast and carving



*Decorative Textured Laminated Glass*



*Custom Tempered Shape Glass Conference Room*



*Acid Etch Textured Glass Wall Decoration*

## GLASS GATES

*Will provide you some safety and meet all requirements while transparency is still sustain*



*Custom Safety Glass Gate with Laminated Decorative Glass*



*Frameless Privacy Glass Gate with Textured Glass*



*Beach Access Frameless Gate with Centerlock Housing & Clear Tempered Glass*

## ALUMINUM GATES

*Create visionary they bring stunning transparency to outdoor projects*



*Safety Glass Gate with Custom Muntins*



*Aluminum Gate with Decorative Laminated Glass*



*Aluminum Gate with Tinted Glass*

PRL'S PRODUCT LINE

# RUBY ALL GLASS SLIDER

*Contemporary and Elegant Interior Top Hung Stainless Steel Sliding System*



*All Glass Office Ruby Slide with Ladder Pulls*

## Features:

- Wall & Glass Mount.
- Weight Limits: 2 Rollers (220)
- Track Length: Up to 20' Long.
- Tempered Glass Thickness: 3/8", 1/2"



*Wall Off Set Mount*



*Glass Mount*



*Biparting Ruby Slider with Tempered Glass*

# TIFFANY ALL GLASS SLIDER

*Top Hung Sliding Unit Slides Effortlessly Using Only Two Small Suspension Points*

## Features:

Wall Mount or Fascia Mount.

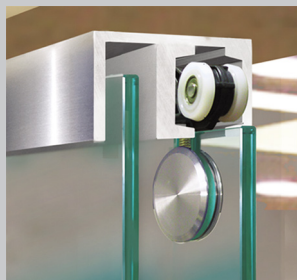
Weight Limits:

-2 Standard Rollers (265 lbs.)

-3 Standard Rollers (353 lbs)

Tempered Glass Thickness:

3/8", 1/2"



*Top Hung Slider  
2 3/8" Diameter Bracket*



*Tiffany Slider Systems with Polished Stainless Steel Ladder Pull*



*Tiffany Slider Systems with Short Ladder Pull*

PRL'S PRODUCT LINE

# CLEARVISION MOVABLE WALL SYSTEM

*Top Hung Movable Glass Wall System Provides Great Design Flexibility*



*Movable All Glass Top Hung Slider/Stacking Door System*

Frameless glass system for commercial and residential entrances PRL offers our Clearvision movable glass stacking wall system that allows glass panels to stack, slide and swing.

## Features:

- Frameless System
- Dual swing or sliding
- In-line, stacking, or segmented configurations
- Convertible sliding panel easily transform into a swing door
- Single or multiple panels
- Flexible top hung complete sliding system
- Top and bottom rails



*Clearvision Frameless Sliding Stacking System*

## CLASSIC FULL FRAME CLADDED SLIDING SYSTEM

*The Beauty of a Uniquely and Elegant Door System Cladded Enhances Any Room*



*In-line Top Hung Alumi-Slider in Brushed Polished Finished*

### Bottom Rolling System:

- Interior Applications Only
- Without Glass Stops
- Unlimited Glass Options
  - Glass thickness 1/4" to 1"
- Luxurious Cladded Finishes
- Two Roller Weight Capacity up to 1000 lbs



*Bottom Rollers*

## CLASSIC FRAMELESS SLIDING SYSTEM

*Providing Strength and Beautiful Solutions for Practically Any Exterior or Interior Application*

PRL's Classic bottom rolling sliding systems offer unlimited options wherever space is valuable and exposure is critical.

### Features:

- Top sliding track  
(2 3/8" W x 1 1/2" H)
- Single Panel/  
Multiple Panels
- Top / Bottom Rail
- Bottom straddle
- SQ bolt lock
- Tandem SS roller
- Bottom sliding track  
(3/8" W x 3/8" H)



*P Style Bottom Roller Sliding Doors & Frameless Sidelites*

# ALL GLASS DOORS

*The Highest Quality Complete Entry Systems with the Fastest Lead Times in the Industry*



*Monumenta All Glass Entrance Doors with Panic Device*

## Features:

- Available up to 10 ft. for taller consult PRL for details
- Seamless Rails and Stiles
- Unlimited Glass Options: 1/2", 5/8" or 3/4" tempered
- Standard & Custom Metal Finishes



**P-Style/ PL100F**



**BP-Style/ PL100B**



**F-Style/ PL100D**



**A-Style/ PL100FADA**



*Frameless Glass System with All Glass Entrance Doors and Panic Device*

## PANIC DEVICE

*Interior Push Bars for Exterior Doors That Meets Emergency Egress Code Requirements and Decorative Interior*



*Frameless All Glass Doors with PL100 Panic Device*

PRL'S PRODUCT LINE



# FULL FRAME CLADDED DOORS

*We Manufacture Complete Luxurious Entrance Systems*



*Full Frame Cladded Doors with Panic Device*

## Features:

- Unlimited Glass Options  
1/4" to 1" Thickness
- Luxurious Cladded Finishes
- Specialty Hardware & wide options of Panic Devices
- No Glass Door Stops



**Ultra Narrow  
Custom Pull**



**Narrow- 3"  
Offset Pull**



**Medium- 4 1/8"  
Offset Ladder Pull**



**Wide- 5 5/8"  
PL100 Panic**



*Narrow Stile Full Frame Cladded Doors*

PRL'S PRODUCT LINE

## ULTRA NARROW CLADDED DOORS

*Provides an Expansive Glass View, while Incorporating Minimal Stiles for Weathering*

### Features

- Unlimited Glass Thickness Options 1/4" to 3/4"
- Luxurious Cladded Finishes Options
- Specialty Hardware Selection & Panic Devices
- No Glass Door Stops



WS-878  
7/8"



WS-450/WS-4751  
5/16"



*Custom Height Ultra Narrow Cladded Door with Panic Device*



*Ultra Narrow Cladded Doors with Panic Device*

PRL'S PRODUCT LINE

# ALUMINUM DOORS

*Aluminum Doors are Available in Many Different Styles Including an Adaptable Custom Design*

## Features:

- Wide Glass Options
  - Custom Framing
  - Standard Anodized Finishes & Custom Powder Coat
  - Specialty Hardware
  - Panic Devices
- \*consult PRL for details.*



*Wide Stile Aluminum Door with Panic Device*



**Narrow Stile**

**Medium Stile**

**Wide Stile**

**Custom Stile**

*Custom Height & custom muntin*



*Aluminum Commercial Medium Stile Door*

## EASY LOCKING LADDER PULLS

*Popular Due to Its Easy Locking Mechanism at Waist Height*

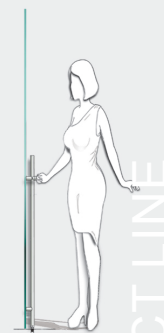


*All Glass Ruby Office Sliders with Short Easy Locking Ladder Pulls*

### Featuring:

- Half or full length locks at head or floor
- Flexible key outside & thumb-turn inside option
- Elegant custom designs
- Custom length available

*\*consult PRL for details.*



*Easy locking mechanism at a convenient height*

PRL'S PRODUCT LINE



*All Glass Entrance Door with Full Height Easy Locking Ladder Pull*

# CURTAINWALL

*Designed and Engineered for Maximum Performance*



*CW-700 Curtainwall with Solarban IG Units*

## Series:

PLCW-600  
2 1/2" x 6"  
1" Offset Glazed

PLCW-700  
2 1/2" x 7"  
1" Offset Glazed

PLCW-1000  
2 1/2" x 10"  
1" Offset Glazed



*Curtainwall with Low-E Glass IG Units*

# STOREFRONTS

*Complete Glass and Metal Systems Ready to Install*

## Series:

- 201 2" x 4 1/2"  
1/4" Offset Glazed
- 250 2" x 4 1/2"  
1" Center Glazed
- 251 2" x 4 1/2"  
1" Offset Glazed
- 400 1 3/4" x 4"  
1/4" Center Glazed
- 401 1 3/4" x 4"  
1/4" Offset Glazed
- 450 1 3/4" x 4 1/2"  
1/4" Center Glazed



*Aluminum Storefront in Custom Painted Finish*

**THERMALLY BROKEN STOREFRONT COMING SOON!**



*Complete 250 Storefront System with IG Units*

# ALUMINUM CUSTOM EXTRUSION

*PRL's State of the art 2400 tons/8" Diameter*



*Extrusion Press*

There is no challenge to PRL when it comes to producing the highest quality aluminum extrusion with our equipment. Very complex hollows of all sizes and shapes are very common for us.

- Custom designed extrusions
- Up to 8" diameter shapes extrude
- Fabrication/CNC Capabilities
- Fastest leadtimes in the industry\*
- Finishing:
  - Clear anodized, bronze anodized,
  - Custom paints colors available on request

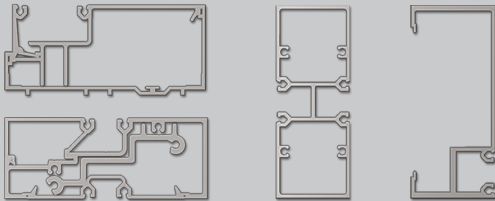
## STOCK LENGTH

*Many Series Available Ready to Be Ship*

### Features

- 24' Stock Lengths
  - Custom Lengths cut to size\*
- Ready to ship out next day
  - Will call the same day
- Fastest leadtimes in the industry\*

*\*Consult us for details*



*Aluminum Stock Inventory*

## BREAKMETAL

*Custom Form Metal Profiles*



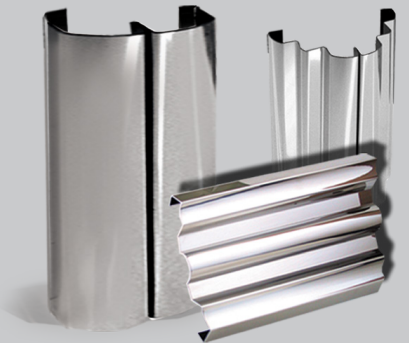
*Full Frame Doors & Storefront Framing Cladded in Satin Brass*

### Clad

- Full Frame Doors
- Storefront Framing
- Column Covers
- Cornices
- Panel Pans
- Top Caps
- Miter Returns/Corners
- Connectors

### Metal Finishing

- Mirror Polishing
- Directional
- Satin Brush



# INSULATED GLASS

*Total Energy Performance Product that Translates into Reduced Energy Cost and Increased Comfort*



*IG Units with Low E Glass*

PRL IG Units are a high quality, total energy performance product that translates into reduced energy cost and increased comfort. Insulated glass helps maintain inside room temperatures while saving energy.

## **IG Unit line capabilities**

- Max. sizes 98" x 137"
- Min. size 6" x 6"
- Lead-times are 2 to 3 working days
- 24-hour service available upon customer's request
- Thickness from 1/2" to 1 1/2"



*Custom Shape IG Unit with Low-E Glass*

PRL'S PRODUCT LINE

# TEMPERED GLASS

*Unlimited Glass Applications*

Tempered glass is always much more resistant to breakage than raw glass. Even if it breaks, the glass disintegrates into relatively small pieces, which is less likely to cause a serious injury. It is very common for glass doors, sidelites, balconies, etc.

***Oversize tempered glass available for 110" x 189"***

*\*consult PRL for details.*



*Frameless Tempered Glass Entrance Door System*



*All Glass Tempered Glass*

# LAMINATED GLASS

*Offers Unlimited Make-up Possibilities*



PRL'S PRODUCT LINE

## FIRE RESISTANT GLASS

*Think Clear. Think Big. Think Keralite.*



*Storefront System with Keralite Fire Rated IG Units*

PRL Carries Keralite®  
Firmed or Laminated.

### The best in class glass ceramic features:

- The largest extended-size glass ceramic available
- Lowest haze
- Highest color rendering index
- Fastest in the industry
- Superior Customer Service

## BULLET RESISTANT GLASS

Available **Levels 1-8** with the Fastest Leadtimes in the Industry

### Features:

- Lighter glass alternatives with 1" thickness thru level 3
- Full Range/ No Spall Protection
- High Ballistic Resistance without excessive weight or thickness
- Exclusive make-up glass, PVB and Polycarbonate
- Thinner make-up fit security doors glazing pocket
- NIJ 0108.01



- Level 1-8



*Fixed Glass Panels with Bullet Resistant Glass*

# SPANDREL COLOR GLASS

*For Exterior and Interior Applications*



*Custom Spandrel Color Glass*

PRL Spandrel Glass with its nearly unlimited range of colors offers greatly increased options for interior and exterior glass applications. Color matching is no problem for PRL, using a computerized color spectrophotometer. Applicable on annealed or tempered, low iron, clear, and reflective glass products. Available in standard and custom colors.

## **Spandrel Offers:**

- Aesthetic
- High Durability
- Heat-treated
- Multiple-Applications
- Unlimited Color Options

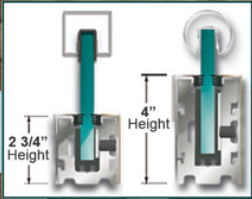


*White Spandrel Wall Cladded*

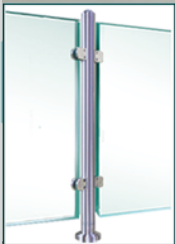
PRL'S PRODUCT LINE

# HANDRAIL SYSTEMS

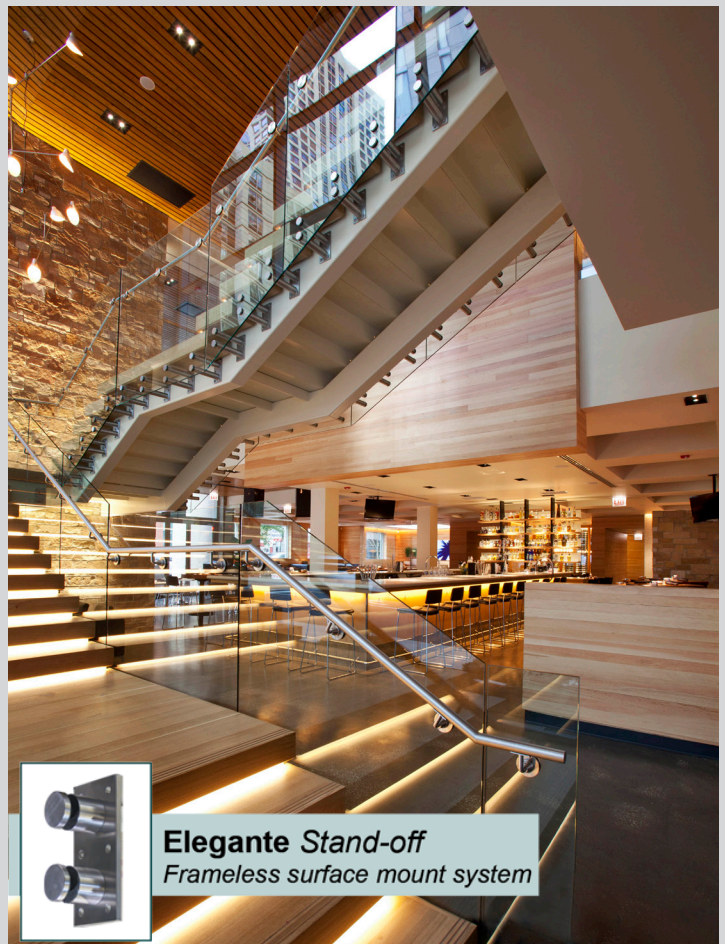
For Exterior and Interior Applications



**Rapid Dry-set**  
Precision bolt assembly



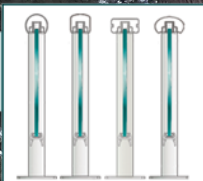
**Flex Post Series**  
Optional adjustable top cap



**Elegante Stand-off**  
Frameless surface mount system

PRL'S PRODUCT LINE

PRL'S PRODUCT LINE



**Infinity**  
Aluminum modular railing



**Handrail Glass**  
Safety Laminated Glass

# SHOWER & STEAM UNITS

COMPLETE SHOWER UNITS GLASS &  
HARDWARE PRE-FAB, READY TO INSTALL!



13644 NELSON AVE.  
CITY OF INDUSTRY, CA. 91746



*Inline Shower Unit with Starphire Shower Glass*



*Custom Ruby Shower Slider*



*Steam Unit with Custom Pull*



*Glass Partition with Custom Sandblast*



*Single Door Shower Units*



*90 Degree- Tiffany Shower Slider*



*Bypass Shower Slider*



PHONE: 877.775.2586

FAX: 877.274.8800

[www.prlglass.com](http://www.prlglass.com)